



ELECTRONIC COPY

LG766659603
Report verification at igi.org



February 2, 2026
IGI Report Number **LG766659603**
Description **LABORATORY GROWN DIAMOND**
Shape and Cutting Style **CUSHION MODIFIED BRILLIANT**
Measurements **9.55 X 7.46 X 4.79 MM**
GRADING RESULTS
Carat Weight **3.02 CARATS**
Color Grade **FANCY INTENSE YELLOW**
Clarity Grade **VS 2**

LABORATORY GROWN DIAMOND REPORT

February 2, 2026
IGI Report Number **LG766659603**
Description **LABORATORY GROWN DIAMOND**
Shape and Cutting Style **CUSHION MODIFIED BRILLIANT**
Measurements **9.55 X 7.46 X 4.79 MM**

GRADING RESULTS

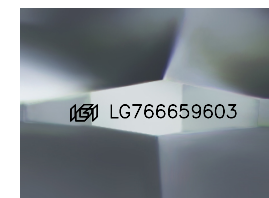
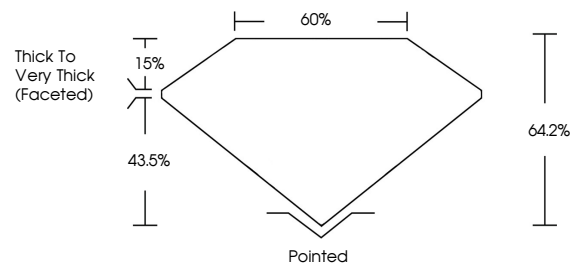
Carat Weight **3.02 CARATS**
Color Grade **FANCY INTENSE YELLOW**
Clarity Grade **VS 2**

ADDITIONAL GRADING INFORMATION

Polish **EXCELLENT**
Symmetry **EXCELLENT**
Fluorescence **NONE**
Inscription(s) **IGI LG766659603**

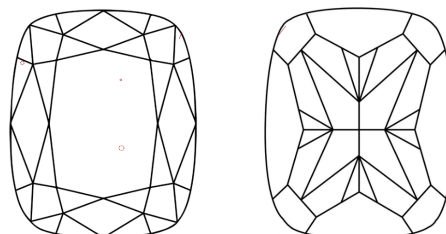
Comments: This Laboratory Grown Diamond was created by Chemical Vapor Deposition (CVD) growth process.
Indications of post-growth treatment.

PROPORTIONS



Sample Image Used

CLARITY CHARACTERISTICS



KEY TO SYMBOLS

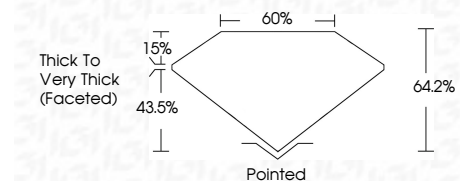
Red symbols indicate internal characteristics.
Green symbols indicate external characteristics.

COLOR

D E F G H I J Faint Very Light Light

CLARITY

FL	IF	VS ¹⁻²	VS ¹⁻²	SI ¹⁻²	I ¹⁻³
Flawless	Internally Flawless	Very Very Slightly Included	Very Slightly Included	Slightly Included	Included



ADDITIONAL GRADING INFORMATION

Polish **EXCELLENT**
Symmetry **EXCELLENT**
Fluorescence **NONE**
Inscription(s) **IGI LG766659603**
Comments: This Laboratory Grown Diamond was created by Chemical Vapor Deposition (CVD) growth process.
Indications of post-growth treatment.



February 2, 2026
IGI Report No **LG766659603**
CUSHION MODIFIED BRILLIANT
3.02 CARATS
Carat Weight **FANCY INTENSE YELLOW**
Color Grade **VS 2**
Clarity Grade **64.2%**
Depth **0.5%**
Table
Girdle
Thick to Very Thick (Faceted)
Pointed
Polish **EXCELLENT**
Symmetry **EXCELLENT**
Fluorescence **NONE**
Inscription(s) **IGI LG766659603**
Comments: This Laboratory Grown Diamond was created by Chemical Vapor Deposition (CVD) growth process.
Indications of post-growth treatment.