



**ELECTRONIC COPY**

LG766658377  
Report verification at igi.org



February 14, 2026  
IGI Report Number **LG766658377**  
Description **LABORATORY GROWN DIAMOND**  
Shape and Cutting Style **CUSHION MODIFIED BRILLIANT**  
Measurements **7.16 X 5.65 X 3.88 MM**  
**GRADING RESULTS**  
Carat Weight **1.37 CARAT**  
Color Grade **FANCY INTENSE YELLOW**  
Clarity Grade **VVS 2**

February 14, 2026  
IGI Report Number **LG766658377**  
Description **LABORATORY GROWN DIAMOND**  
Shape and Cutting Style **CUSHION MODIFIED BRILLIANT**  
Measurements **7.16 X 5.65 X 3.88 MM**

**GRADING RESULTS**

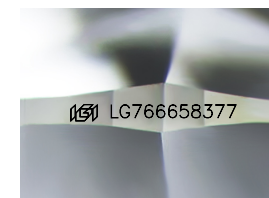
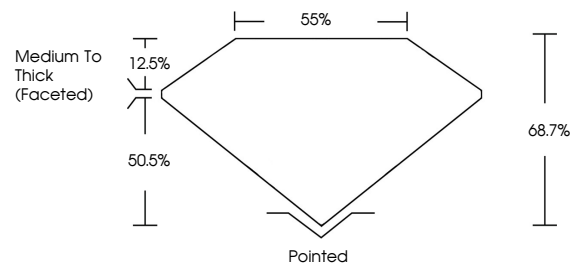
Carat Weight **1.37 CARAT**  
Color Grade **FANCY INTENSE YELLOW**  
Clarity Grade **VVS 2**

**ADDITIONAL GRADING INFORMATION**

Polish **VERY GOOD**  
Symmetry **VERY GOOD**  
Fluorescence **NONE**  
Inscription(s) **IGI LG766658377**

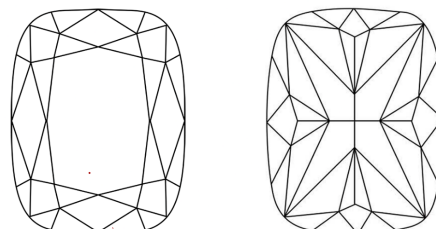
Comments: This Laboratory Grown Diamond was created by Chemical Vapor Deposition (CVD) growth process.

**PROPORTIONS**



Sample Image Used

**CLARITY CHARACTERISTICS**



**KEY TO SYMBOLS**

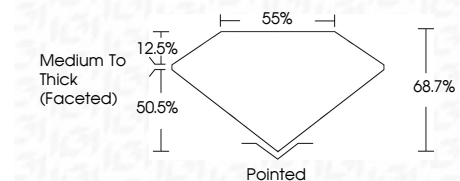
Red symbols indicate internal characteristics.  
Green symbols indicate external characteristics.

**COLOR**

D E F G H I J Faint Very Light Light

**CLARITY**

FL	IF	VVS <sup>1-2</sup>	VS <sup>1-2</sup>	SI <sup>1-2</sup>	I <sup>1-3</sup>
Flawless	Internally Flawless	Very Very Slightly Included	Very Slightly Included	Slightly Included	Included



**ADDITIONAL GRADING INFORMATION**

Polish **VERY GOOD**  
Symmetry **VERY GOOD**  
Fluorescence **NONE**  
Inscription(s) **IGI LG766658377**  
Comments: This Laboratory Grown Diamond was created by Chemical Vapor Deposition (CVD) growth process.



February 14, 2026  
IGI Report No **LG766658377**  
**CUSHION MODIFIED BRILLIANT**  
7.16 X 5.65 X 3.88 MM  
1.37 CARAT  
Color Grade **FANCY INTENSE YELLOW**  
Clarity Grade **VVS 2**  
Depth **68.7%**  
Table **12.5%**  
Girdle **Medium To Thick (Faceted)**  
Culet **Pointed**  
Polish **VERY GOOD**  
Symmetry **VERY GOOD**  
Fluorescence **NONE**  
Inscription(s) **IGI LG766658377**  
Comments: This Laboratory Grown Diamond was created by Chemical Vapor Deposition (CVD) growth process.