



ELECTRONIC COPY

LG766657330
Report verification at igi.org



February 10, 2026
IGI Report Number **LG766657330**
Description **LABORATORY GROWN DIAMOND**
Shape and Cutting Style **CUSHION MODIFIED BRILLIANT**
Measurements **8.17 X 5.75 X 3.83 MM**
GRADING RESULTS
Carat Weight **1.63 CARAT**
Color Grade **FANCY INTENSE ORANGY PINK**
Clarity Grade **VS 2**

February 10, 2026
IGI Report Number **LG766657330**
Description **LABORATORY GROWN DIAMOND**
Shape and Cutting Style **CUSHION MODIFIED BRILLIANT**
Measurements **8.17 X 5.75 X 3.83 MM**

GRADING RESULTS

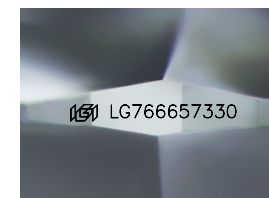
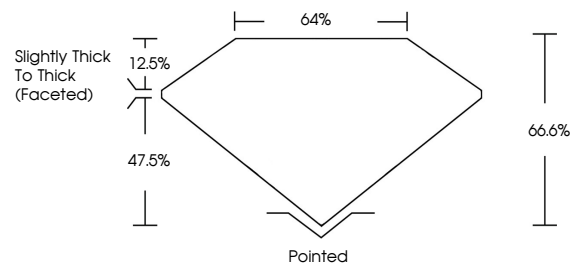
Carat Weight **1.63 CARAT**
Color Grade **FANCY INTENSE ORANGY PINK**
Clarity Grade **VS 2**

ADDITIONAL GRADING INFORMATION

Polish **EXCELLENT**
Symmetry **EXCELLENT**
Fluorescence **SLIGHT**
Inscription(s) **IGI LG766657330**

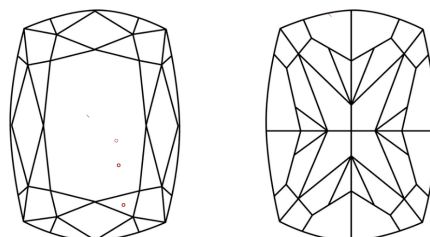
Comments: This Laboratory Grown Diamond was created by Chemical Vapor Deposition (CVD) growth process. Indications of post-growth treatment.

PROPORTIONS



Sample Image Used

CLARITY CHARACTERISTICS



KEY TO SYMBOLS

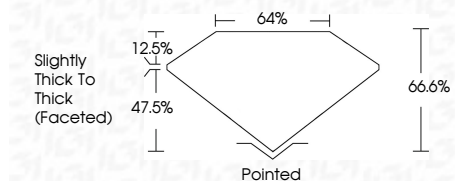
Red symbols indicate internal characteristics.
Green symbols indicate external characteristics.

COLOR

D E F G H I J Faint Very Light Light

CLARITY

FL	IF	VS ¹⁻²	VS ¹⁻²	SI ¹⁻²	I ¹⁻³
Flawless	Internally Flawless	Very Very Slightly Included	Very Slightly Included	Slightly Included	Included



ADDITIONAL GRADING INFORMATION

Polish **EXCELLENT**
Symmetry **EXCELLENT**
Fluorescence **SLIGHT**
Inscription(s) **IGI LG766657330**
Comments: This Laboratory Grown Diamond was created by Chemical Vapor Deposition (CVD) growth process. Indications of post-growth treatment.



February 10, 2026
IGI Report No LG766657330
CUSHION MODIFIED BRILLIANT
8.17 X 5.75 X 3.83 MM
1.63 CARAT
FANCY INTENSE ORANGY PINK
Color Grade
VS 2
66.6%
47.5%
Slightly Thick To Thick (Faceted)
Pointed
EXCELLENT
EXCELLENT
SLIGHT
IGI LG766657330
Comments: This Laboratory Grown Diamond was created by Chemical Vapor Deposition (CVD) growth process. Indications of post-growth treatment.