



ELECTRONIC COPY

LG766657302
Report verification at igi.org



February 9, 2026
IGI Report Number **LG766657302**
Description **LABORATORY GROWN DIAMOND**
Shape and Cutting Style **CUSHION MODIFIED BRILLIANT**
Measurements **7.75 X 5.68 X 3.81 MM**
GRADING RESULTS
Carat Weight **1.55 CARAT**
Color Grade **FANCY INTENSE ORANGE PINK**
Clarity Grade **VS 1**

February 9, 2026
IGI Report Number **LG766657302**
Description **LABORATORY GROWN DIAMOND**
Shape and Cutting Style **CUSHION MODIFIED BRILLIANT**
Measurements **7.75 X 5.68 X 3.81 MM**

GRADING RESULTS

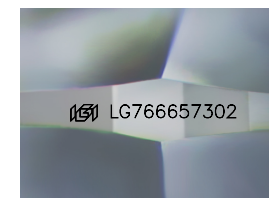
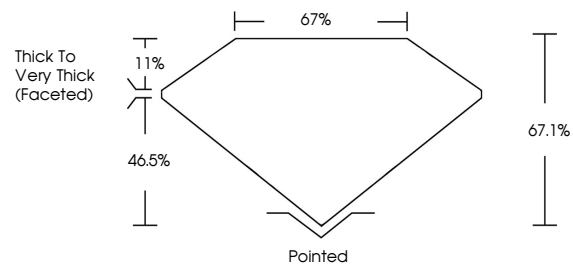
Carat Weight **1.55 CARAT**
Color Grade **FANCY INTENSE ORANGE PINK**
Clarity Grade **VS 1**

ADDITIONAL GRADING INFORMATION

Polish **EXCELLENT**
Symmetry **VERY GOOD**
Fluorescence **SLIGHT**
Inscription(s) **IGI LG766657302**

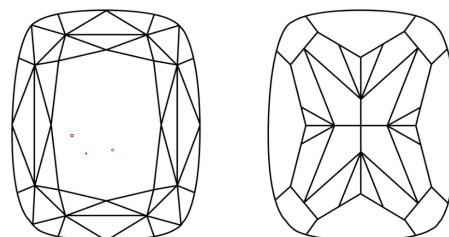
Comments: This Laboratory Grown Diamond was created by Chemical Vapor Deposition (CVD) growth process. Indications of post-growth treatment.

PROPORTIONS



Sample Image Used

CLARITY CHARACTERISTICS



KEY TO SYMBOLS

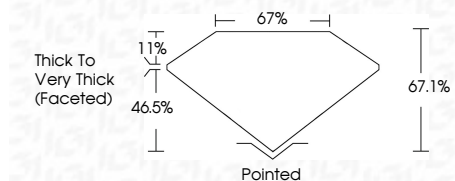
Red symbols indicate internal characteristics.
Green symbols indicate external characteristics.

COLOR

D E F G H I J Faint Very Light Light

CLARITY

FL	IF	VS ¹⁻²	VS ¹⁻²	SI ¹⁻²	I ¹⁻³
Flawless	Internally Flawless	Very Very Slightly Included	Very Slightly Included	Slightly Included	Included



ADDITIONAL GRADING INFORMATION

Polish **EXCELLENT**
Symmetry **VERY GOOD**
Fluorescence **SLIGHT**
Inscription(s) **IGI LG766657302**
Comments: This Laboratory Grown Diamond was created by Chemical Vapor Deposition (CVD) growth process. Indications of post-growth treatment.



February 9, 2026
IGI Report No **LG766657302**
CUSHION MODIFIED BRILLIANT
1.55 CARAT
Carat Weight
Color Grade **FANCY INTENSE ORANGE PINK**
Clarity Grade **VS 1**
Depth **67.1%**
Table **67%**
Girdle **Thick to Very Thick (Faceted)**
Culet **Pointed**
Polish **EXCELLENT**
Symmetry **VERY GOOD**
Fluorescence **SLIGHT**
Inscription(s) **IGI LG766657302**
Comments: This Laboratory Grown Diamond was created by Chemical Vapor Deposition (CVD) growth process. Indications of post-growth treatment.