



ELECTRONIC COPY

LG766656844
Report verification at igi.org



February 13, 2026
IGI Report Number **LG766656844**

Description **LABORATORY GROWN DIAMOND**

Shape and Cutting Style **CUT CORNERED
RECTANGULAR MODIFIED
BRILLIANT**

Measurements **10.31 X 7.04 X 4.83 MM**

GRADING RESULTS

Carat Weight **3.05 CARATS**

Color Grade **FANCY VIVID PINK**

Clarity Grade **VVS 2**

February 13, 2026

IGI Report Number **LG766656844**

Description **LABORATORY GROWN DIAMOND**

Shape and Cutting Style **CUT CORNERED RECTANGULAR
MODIFIED BRILLIANT**

Measurements **10.31 X 7.04 X 4.83 MM**

GRADING RESULTS

Carat Weight **3.05 CARATS**

Color Grade **FANCY VIVID PINK**

Clarity Grade **VVS 2**

ADDITIONAL GRADING INFORMATION

Polish **EXCELLENT**

Symmetry **EXCELLENT**

Fluorescence **SLIGHT**

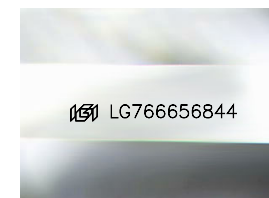
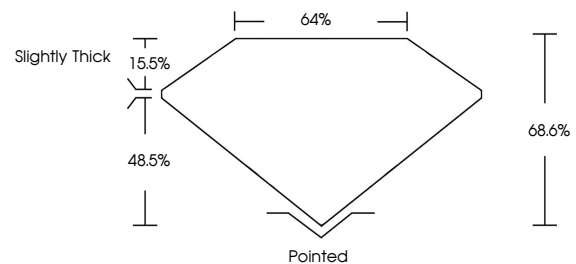
Inscription(s) **IGI LG766656844**

Comments: This Laboratory Grown Diamond was created by Chemical Vapor Deposition (CVD) growth process.

Indications of post-growth treatment.

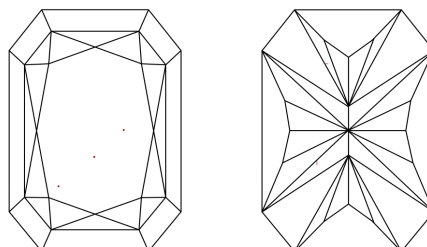
Secondary color: Orange

PROPORTIONS



Sample Image Used

CLARITY CHARACTERISTICS



KEY TO SYMBOLS

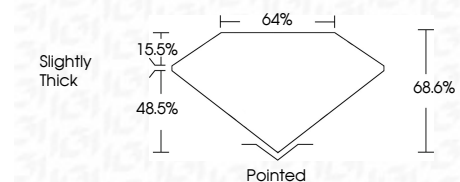
Red symbols indicate internal characteristics.
Green symbols indicate external characteristics.

COLOR

D E F G H I J Faint Very Light Light

CLARITY

FL	IF	VVS ¹⁻²	VS ¹⁻²	SI ¹⁻²	I ¹⁻³
Flawless	Internally Flawless	Very Very Slightly Included	Very Slightly Included	Slightly Included	Included



ADDITIONAL GRADING INFORMATION

Polish **EXCELLENT**

Symmetry **EXCELLENT**

Fluorescence **SLIGHT**

Inscription(s) **IGI LG766656844**

Comments: This Laboratory Grown Diamond was created by Chemical Vapor Deposition (CVD) growth process.

Indications of post-growth treatment.

Secondary color: Orange



February 13, 2026
IGI Report No LG766656844
CUT CORNERED RECT. MODIFIED BRILLIANT
3.05 CARATS
FANCY VIVID PINK
VVS 2
68.6%
48.5%
Slightly Thick
Pointed
EXCELLENT
EXCELLENT
SLIGHT
IGI LG766656844
Comments: This Laboratory Grown Diamond was created by Chemical Vapor Deposition (CVD) growth process. Indications of post-growth treatment. Secondary color: Orange