



**ELECTRONIC COPY**

LG766655437  
Report verification at [igi.org](http://igi.org)



January 24, 2026  
IGI Report Number **LG766655437**  
Description **LABORATORY GROWN DIAMOND**  
Shape and Cutting Style **CUSHION MODIFIED BRILLIANT**  
Measurements **9.67 X 7.97 X 5.50 MM**  
**GRADING RESULTS**  
Carat Weight **4.13 CARATS**  
Color Grade **FANCY VIVID BROWNISH PINK**  
Clarity Grade **VS 1**

January 24, 2026  
IGI Report Number **LG766655437**  
Description **LABORATORY GROWN DIAMOND**  
Shape and Cutting Style **CUSHION MODIFIED BRILLIANT**  
Measurements **9.67 X 7.97 X 5.50 MM**

**GRADING RESULTS**

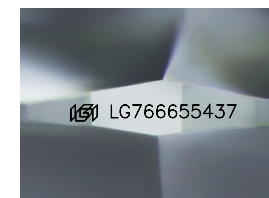
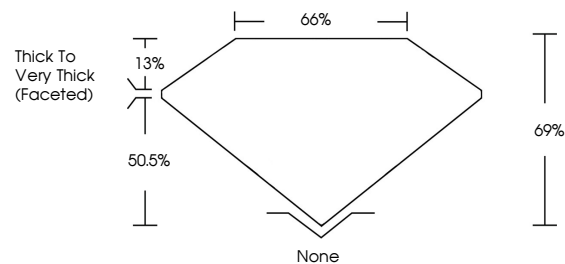
Carat Weight **4.13 CARATS**  
Color Grade **FANCY VIVID BROWNISH PINK**  
Clarity Grade **VS 1**

**ADDITIONAL GRADING INFORMATION**

Polish **EXCELLENT**  
Symmetry **EXCELLENT**  
Fluorescence **SLIGHT**  
Inscription(s) **IGI LG766655437**

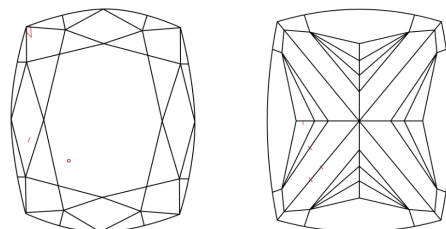
Comments: This Laboratory Grown Diamond was created by Chemical Vapor Deposition (CVD) growth process.  
Indications of post-growth treatment.

**PROPORTIONS**



Sample Image Used

**CLARITY CHARACTERISTICS**



**KEY TO SYMBOLS**

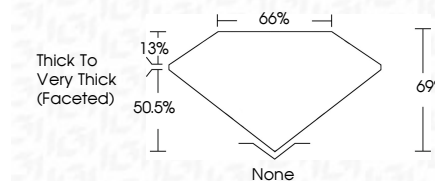
Red symbols indicate internal characteristics.  
Green symbols indicate external characteristics.

**COLOR**

D E F G H I J Faint Very Light Light

**CLARITY**

FL	IF	VS <sup>1-2</sup>	VS <sup>1-2</sup>	SI <sup>1-2</sup>	I <sup>1-3</sup>
Flawless	Internally Flawless	Very Very Slightly Included	Very Slightly Included	Slightly Included	Included



**ADDITIONAL GRADING INFORMATION**

Polish **EXCELLENT**  
Symmetry **EXCELLENT**  
Fluorescence **SLIGHT**  
Inscription(s) **IGI LG766655437**  
Comments: This Laboratory Grown Diamond was created by Chemical Vapor Deposition (CVD) growth process.  
Indications of post-growth treatment.



January 24, 2026  
IGI Report No **LG766655437**  
**CUSHION MODIFIED BRILLIANT**  
**4.13 CARATS**  
**FANCY VIVID BROWNISH PINK**  
**VS 1**  
**69%**  
**66%**  
**Thick to Very Thick (Faceted)**  
**None**  
**EXCELLENT**  
**EXCELLENT**  
**SLIGHT**  
**IGI LG766655437**  
Comments: This Laboratory Grown Diamond was created by Chemical Vapor Deposition (CVD) growth process.  
Indications of post-growth treatment.