



**ELECTRONIC COPY**

LG766655404  
Report verification at igi.org



January 23, 2026

IGI Report Number **LG766655404**

Description **LABORATORY GROWN DIAMOND**

Shape and Cutting Style **HEART MODIFIED BRILLIANT**

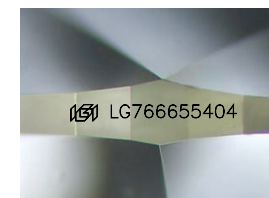
Measurements **9.73 X 11.83 X 6.09 MM**

**GRADING RESULTS**

Carat Weight **5.28 CARATS**

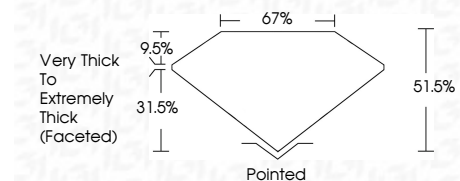
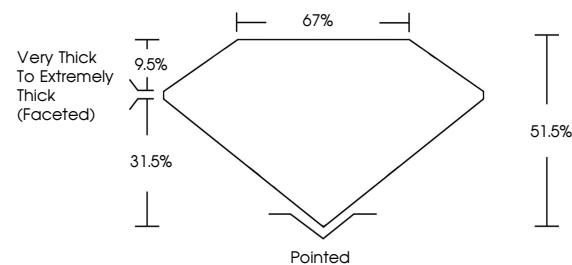
Color Grade **FANCY VIVID BROWN PINK**

Clarity Grade **VS 2**

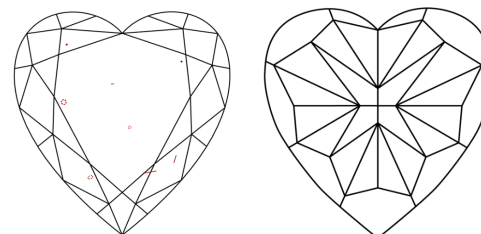


Sample Image Used

**PROPORTIONS**



**CLARITY CHARACTERISTICS**



**KEY TO SYMBOLS**

Red symbols indicate internal characteristics.  
Green symbols indicate external characteristics.

**COLOR**

D E F G H I J Faint Very Light Light

**CLARITY**

FL	IF	VS <sup>1-2</sup>	VS <sup>1-2</sup>	SI <sup>1-2</sup>	I <sup>1-3</sup>
Flawless	Internally Flawless	Very Very Slightly Included	Very Slightly Included	Slightly Included	Included

**ADDITIONAL GRADING INFORMATION**

Polish **EXCELLENT**

Symmetry **EXCELLENT**

Fluorescence **SLIGHT**

Inscription(s) **IGI LG766655404**

Comments: This Laboratory Grown Diamond was created by Chemical Vapor Deposition (CVD) growth process. Indications of post-growth treatment.



January 23, 2026  
IGI Report No LG766655404  
**HEART MODIFIED BRILLIANT**

5.28 CARATS  
Carat Weight  
FANCY VIVID BROWN PINK  
Color Grade  
VS 2  
Clarity Grade  
67%  
Depth  
31.5%  
Table  
9.5%  
Very Thick to Extremely Thick (Faceted)

Pointed  
EXCELLENT  
EXCELLENT  
SLIGHT  
IGI LG766655404

Comments: This Laboratory Grown Diamond was created by Chemical Vapor Deposition (CVD) growth process. Indications of post-growth treatment.

January 23, 2026

IGI Report Number **LG766655404**

Description **LABORATORY GROWN DIAMOND**

Shape and Cutting Style **HEART MODIFIED BRILLIANT**

Measurements **9.73 X 11.83 X 6.09 MM**

**GRADING RESULTS**

Carat Weight **5.28 CARATS**

Color Grade **FANCY VIVID BROWN PINK**

Clarity Grade **VS 2**

**ADDITIONAL GRADING INFORMATION**

Polish **EXCELLENT**

Symmetry **EXCELLENT**

Fluorescence **SLIGHT**

Inscription(s) **IGI LG766655404**

Comments: This Laboratory Grown Diamond was created by Chemical Vapor Deposition (CVD) growth process. Indications of post-growth treatment.