



**ELECTRONIC COPY**

LG766655339  
Report verification at igi.org



January 26, 2026  
IGI Report Number **LG766655339**  
Description **LABORATORY GROWN DIAMOND**  
Shape and Cutting Style **MODIFIED RECTANGULAR  
CUSHION STEP CUT**  
Measurements **11.07 X 8.72 X 6.06 MM**  
**GRADING RESULTS**  
Carat Weight **5.06 CARATS**  
Color Grade **FANCY INTENSE PINK**  
Clarity Grade **VS 2**

**LABORATORY GROWN DIAMOND REPORT**

January 26, 2026  
IGI Report Number **LG766655339**  
Description **LABORATORY GROWN DIAMOND**  
Shape and Cutting Style **MODIFIED RECTANGULAR  
CUSHION STEP CUT**  
Measurements **11.07 X 8.72 X 6.06 MM**

**GRADING RESULTS**

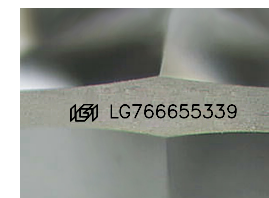
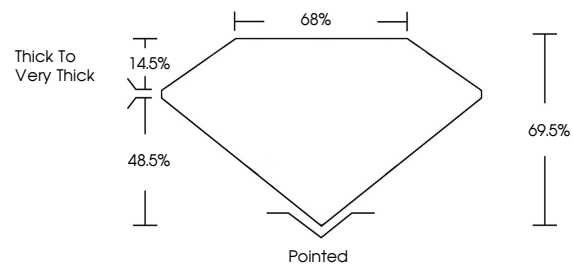
Carat Weight **5.06 CARATS**  
Color Grade **FANCY INTENSE PINK**  
Clarity Grade **VS 2**

**ADDITIONAL GRADING INFORMATION**

Polish **VERY GOOD**  
Symmetry **EXCELLENT**  
Fluorescence **SLIGHT**  
Inscription(s) **IGI LG766655339**

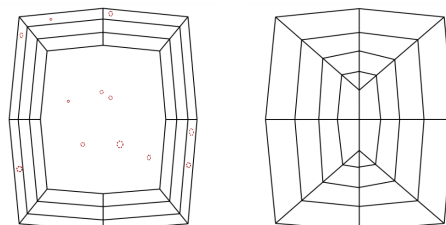
Comments: This Laboratory Grown Diamond was created by Chemical Vapor Deposition (CVD) growth process. Indications of post-growth treatment.

**PROPORTIONS**



Sample Image Used

**CLARITY CHARACTERISTICS**



**KEY TO SYMBOLS**

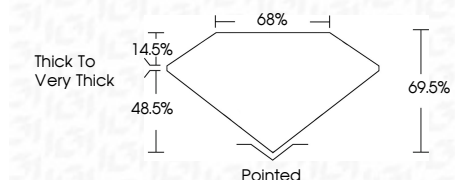
Red symbols indicate internal characteristics.  
Green symbols indicate external characteristics.

**COLOR**

D E F G H I J Faint Very Light Light

**CLARITY**

FL	IF	VS <sup>1-2</sup>	VS <sup>1-2</sup>	SI <sup>1-2</sup>	I <sup>1-3</sup>
Flawless	Internally Flawless	Very Very Slightly Included	Very Slightly Included	Slightly Included	Included



**ADDITIONAL GRADING INFORMATION**

Polish **VERY GOOD**  
Symmetry **EXCELLENT**  
Fluorescence **SLIGHT**  
Inscription(s) **IGI LG766655339**  
Comments: This Laboratory Grown Diamond was created by Chemical Vapor Deposition (CVD) growth process. Indications of post-growth treatment.



January 26, 2026  
IGI Report No **LG766655339**  
**MODIFIED RECTANGULAR CUSHION STEP CUT**  
**11.07 X 8.72 X 6.06 MM**  
Carat Weight **5.06 CARATS**  
Color Grade **FANCY INTENSE PINK**  
Clarity Grade **VS 2**  
Depth **48.5%**  
Table **14.5%**  
Girdle **Thick to Very Thick**  
Culet **Pointed**  
Polish **VERY GOOD**  
Symmetry **EXCELLENT**  
Fluorescence **SLIGHT**  
Inscription(s) **IGI LG766655339**  
Comments: This Laboratory Grown Diamond was created by Chemical Vapor Deposition (CVD) growth process. Indications of post-growth treatment.