



ELECTRONIC COPY

LG766655331
Report verification at igi.org



January 26, 2026
IGI Report Number **LG766655331**
Description **LABORATORY GROWN DIAMOND**
Shape and Cutting Style **CUSHION MODIFIED BRILLIANT**
Measurements **12.31 X 8.49 X 5.48 MM**
GRADING RESULTS
Carat Weight **5.32 CARATS**
Color Grade **FANCY VIVID PINK**
Clarity Grade **VS 2**

LABORATORY GROWN DIAMOND REPORT

January 26, 2026
IGI Report Number **LG766655331**
Description **LABORATORY GROWN DIAMOND**
Shape and Cutting Style **CUSHION MODIFIED BRILLIANT**
Measurements **12.31 X 8.49 X 5.48 MM**

GRADING RESULTS

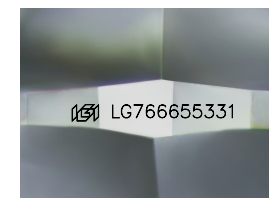
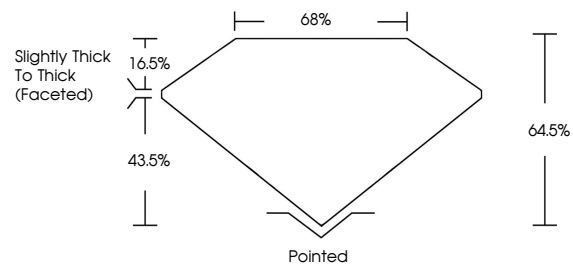
Carat Weight **5.32 CARATS**
Color Grade **FANCY VIVID PINK**
Clarity Grade **VS 2**

ADDITIONAL GRADING INFORMATION

Polish **EXCELLENT**
Symmetry **EXCELLENT**
Fluorescence **SLIGHT**
Inscription(s) **LG766655331**

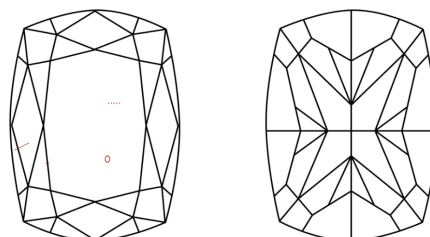
Comments: This Laboratory Grown Diamond was created by Chemical Vapor Deposition (CVD) growth process.
Indications of post-growth treatment.

PROPORTIONS



Sample Image Used

CLARITY CHARACTERISTICS



KEY TO SYMBOLS

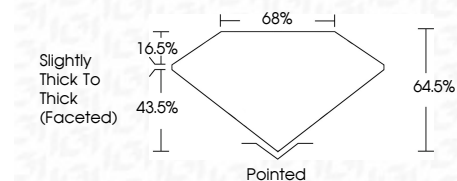
Red symbols indicate internal characteristics.
Green symbols indicate external characteristics.

COLOR

D E F G H I J Faint Very Light Light

CLARITY

FL	IF	VS ¹⁻²	VS ¹⁻²	SI ¹⁻²	I ¹⁻³
Flawless	Internally Flawless	Very Very Slightly Included	Very Slightly Included	Slightly Included	Included



ADDITIONAL GRADING INFORMATION

Polish **EXCELLENT**
Symmetry **EXCELLENT**
Fluorescence **SLIGHT**
Inscription(s) **LG766655331**
Comments: This Laboratory Grown Diamond was created by Chemical Vapor Deposition (CVD) growth process.
Indications of post-growth treatment.



January 26, 2026
IGI Report No **LG766655331**
CUSHION MODIFIED BRILLIANT
12.31 X 8.49 X 5.48 MM
Carat Weight **5.32 CARATS**
Color Grade **FANCY VIVID PINK**
Clarity Grade **VS 2**
Depth **64.5%**
Table **68%**
Girdle **Slightly Thick To Thick (Faceted)**
Culet **Pointed**
Polish **EXCELLENT**
Symmetry **EXCELLENT**
Fluorescence **SLIGHT**
Inscription(s) **LG766655331**
Comments: This Laboratory Grown Diamond was created by Chemical Vapor Deposition (CVD) growth process.
Indications of post-growth treatment.