

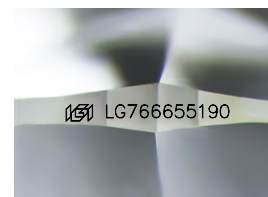
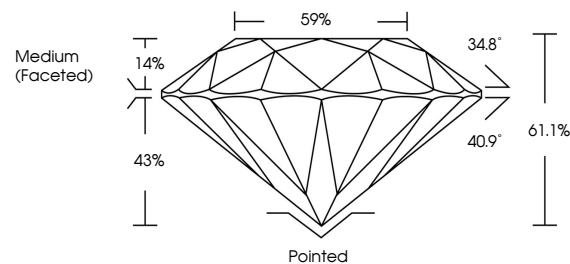


**ELECTRONIC COPY**

## LABORATORY GROWN DIAMOND REPORT

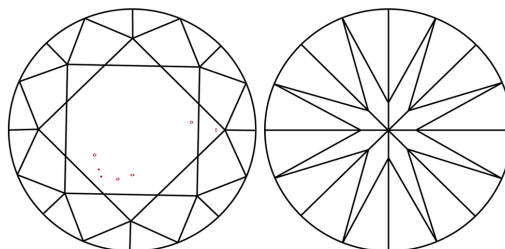
LG766655190  
Report verification at [lgi.org](https://lgi.org)

## PROPORTIONS



Sample Image Used

## CLARITY CHARACTERISTICS



### KEY TO SYMBOLS

Red symbols indicate internal characteristics.  
Green symbols indicate external characteristics.

## COLOR

D E F G H I J Faint Very Light Light

## CLARITY

FL	IF	VVS <sup>1-2</sup>	VS <sup>1-2</sup>	SI <sup>1-2</sup>	I <sup>1-3</sup>
Flawless	Internally Flawless	Very Very Slightly Included	Very Slightly Included	Slightly Included	Included

## LABORATORY GROWN DIAMOND REPORT



January 20, 2026

IGI Report Number **LG766655190**Description **LABORATORY GROWN DIAMOND**Shape and Cutting Style **ROUND BRILLIANT**

Measurements 8.14 - 8.16 X 4.98 MM

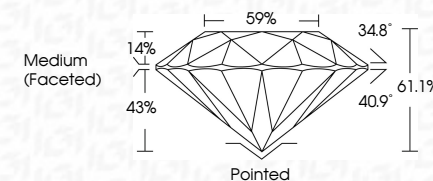
## GRADING RESULTS

Carat Weight **2.04 CARATS**

Color Grade E

Clarity Grade VS 1

Cut Grade **IDEAL**



### ADDITIONAL GRADING INFORMATION

Polish **EXCELLENT**Symmetry **EXCELLENT**Fluorescence NONEInscription(s)  LG76655190

Comments: This Laboratory Grown Diamond was created by Chemical Vapor Deposition (CVD) growth process.  
Type IIa



IG

January 20, 2026	GI Report No LG766658190	2.04 CARATS	E	VS 1	Pointed	Comments: Created by Crown Diamond usa Created by Chemical Vapor Deposition CVD growth process. Type IIG
ROUND BRILLIANT				IDEAL	EXCELLENT	
				61.1%	EXCELLENT	
				59%	NONE	
				Medium (Faceted)	169 LG766658190	
	Carat Weight	Color Grade	Clarity Grade	Cut Grade	Depth	Symmetry
					Table	Fluorescence
					Grade	Inscriptions(s)
						Culet
						Polish

