



ELECTRONIC COPY

LG766652794
Report verification at igi.org



January 27, 2026

IGI Report Number **LG766652794**

Description **LABORATORY GROWN DIAMOND**

Shape and Cutting Style **CUT CORNERED
RECTANGULAR MODIFIED
BRILLIANT**

Measurements **7.15 X 4.99 X 3.29 MM**

GRADING RESULTS

Carat Weight **1.09 CARAT**

Color Grade **FANCY DEEP BLUISH GREEN**

Clarity Grade **VS 1**

LABORATORY GROWN DIAMOND REPORT

January 27, 2026

IGI Report Number **LG766652794**

Description **LABORATORY GROWN DIAMOND**

Shape and Cutting Style **CUT CORNERED RECTANGULAR
MODIFIED BRILLIANT**

Measurements **7.15 X 4.99 X 3.29 MM**

GRADING RESULTS

Carat Weight **1.09 CARAT**

Color Grade **FANCY DEEP BLUISH GREEN**

Clarity Grade **VS 1**

ADDITIONAL GRADING INFORMATION

Polish **EXCELLENT**

Symmetry **EXCELLENT**

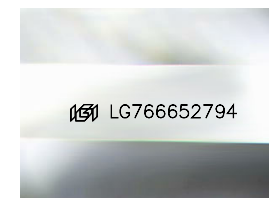
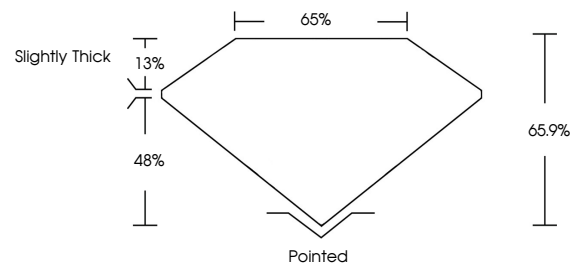
Fluorescence **NONE**

Inscription(s) **IGI LG766652794**

Comments: This Laboratory Grown Diamond was created by Chemical Vapor Deposition (CVD) growth process.

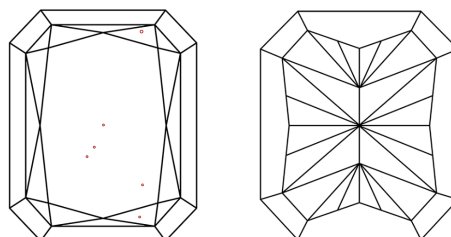
Indications of post-growth treatment.

PROPORTIONS



Sample Image Used

CLARITY CHARACTERISTICS



KEY TO SYMBOLS

Red symbols indicate internal characteristics.
Green symbols indicate external characteristics.

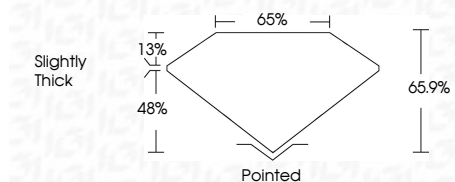
COLOR

D E F G H I J Faint Very Light Light

CLARITY

FL IF VS¹⁻² VS¹⁻² SI¹⁻² I¹⁻³

Flawless Internally Flawless Very Very Slightly Included Very Slightly Included Slightly Included Included



ADDITIONAL GRADING INFORMATION

Polish **EXCELLENT**

Symmetry **EXCELLENT**

Fluorescence **NONE**

Inscription(s) **IGI LG766652794**

Comments: This Laboratory Grown Diamond was created by Chemical Vapor Deposition (CVD) growth process. Indications of post-growth treatment.



IGI



January 27, 2026
IGI Report No. LG766652794
CUT CORNERED RECT. MODIFIED BRILLIANT

7.15 X 4.99 X 3.29 MM
1.09 CARAT
FANCY DEEP BLUISH GREEN
VS 1
65.9%
Slightly Thick

Pointed
EXCELLENT
EXCELLENT
NONE
IGI LG766652794

Comments: This Laboratory Grown Diamond was created by Chemical Vapor Deposition (CVD) growth process. Indications of post-growth treatment.