



ELECTRONIC COPY

LG766649546
Report verification at igi.org



January 29, 2026
IGI Report Number **LG766649546**
Description **LABORATORY GROWN DIAMOND**
Shape and Cutting Style **CUSHION MODIFIED BRILLIANT**
Measurements **12.02 X 9.69 X 6.58 MM**
GRADING RESULTS
Carat Weight **7.00 CARATS**
Color Grade **FANCY INTENSE YELLOW**
Clarity Grade **VS 2**

January 29, 2026
IGI Report Number **LG766649546**
Description **LABORATORY GROWN DIAMOND**
Shape and Cutting Style **CUSHION MODIFIED BRILLIANT**
Measurements **12.02 X 9.69 X 6.58 MM**

GRADING RESULTS

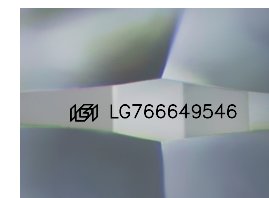
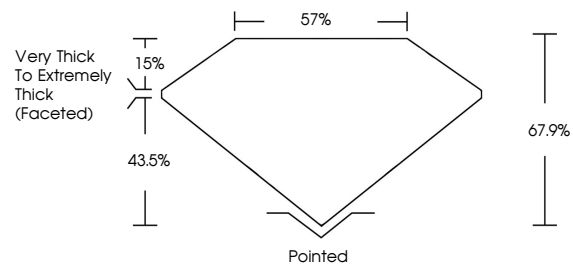
Carat Weight **7.00 CARATS**
Color Grade **FANCY INTENSE YELLOW**
Clarity Grade **VS 2**

ADDITIONAL GRADING INFORMATION

Polish **EXCELLENT**
Symmetry **EXCELLENT**
Fluorescence **NONE**
Inscription(s) **IGI LG766649546**

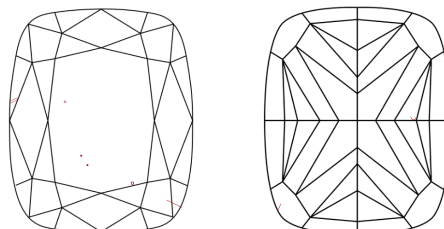
Comments: This Laboratory Grown Diamond was created by Chemical Vapor Deposition (CVD) growth process.

PROPORTIONS



Sample Image Used

CLARITY CHARACTERISTICS



KEY TO SYMBOLS

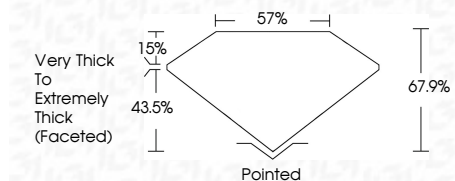
Red symbols indicate internal characteristics.
Green symbols indicate external characteristics.

COLOR

D E F G H I J Faint Very Light Light

CLARITY

FL	IF	VS ¹⁻²	VS ¹⁻²	SI ¹⁻²	I ¹⁻³
Flawless	Internally Flawless	Very Very Slightly Included	Very Slightly Included	Slightly Included	Included



ADDITIONAL GRADING INFORMATION

Polish **EXCELLENT**
Symmetry **EXCELLENT**
Fluorescence **NONE**
Inscription(s) **IGI LG766649546**
Comments: This Laboratory Grown Diamond was created by Chemical Vapor Deposition (CVD) growth process.



January 29, 2026
IGI Report No LG766649546
CUSHION MODIFIED BRILLIANT
12.02 X 9.69 X 6.58 MM
7.00 CARATS
FANCY INTENSE YELLOW
VS 2
67.9%
57%
Very Thick to Extremely Thick (Faceted)
Pointed
EXCELLENT
EXCELLENT
NONE
IGI LG766649546
Comments: This Laboratory Grown Diamond was created by Chemical Vapor Deposition (CVD) growth process.