



ELECTRONIC COPY

LG766649405
Report verification at igi.org



February 4, 2026

IGI Report Number **LG766649405**

Description **LABORATORY GROWN DIAMOND**

Shape and Cutting Style **PEAR BRILLIANT**

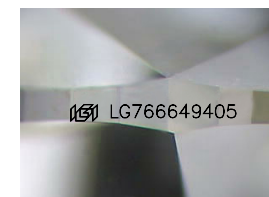
Measurements **12.40 X 8.15 X 5.12 MM**

GRADING RESULTS

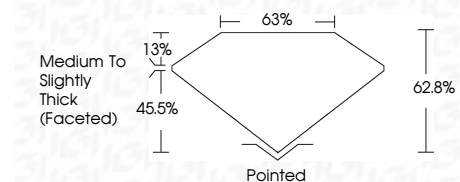
Carat Weight **3.01 CARATS**

Color Grade **F**

Clarity Grade **VS 2**



Sample Image Used



ADDITIONAL GRADING INFORMATION

Polish **EXCELLENT**

Symmetry **EXCELLENT**

Fluorescence **NONE**

Inscription(s) **IGI LG766649405**

Comments: This Laboratory Grown Diamond was created by Chemical Vapor Deposition (CVD) growth process. Type IIa

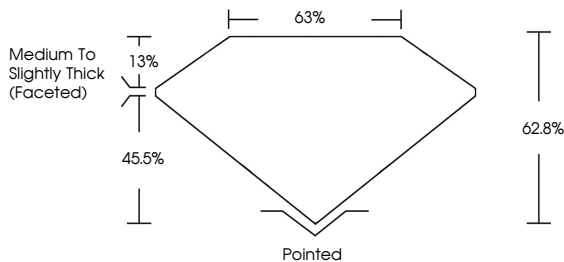


| | | | | | | | | | | | | | |
|------------------------|---------------------------|-----------------------|--------------------|----------|-------------|--------------|------------|---|----------------|------------------|------------------|---|------------------------|
| February 4, 2026 | IGI Report No LG766649405 | PEAR BRILLIANT | 3.01 CARATS | F | VS 2 | 62.8% | 63% | Medium to Slightly Thick (Faceted) | Pointed | EXCELLENT | EXCELLENT | NONE | IGI LG766649405 |
| 12.40 X 8.15 X 5.12 MM | Carat Weight | Color Grade | Clarity Grade | Table | Depth | Girdle | Culet | Polish | Symmetry | Fluorescence | Inscription(s) | Comments: This Laboratory Grown Diamond was created by Chemical Vapor Deposition (CVD) growth process. Type IIa | |

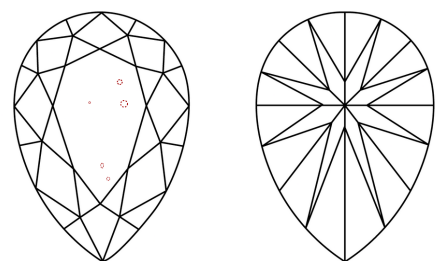
February 4, 2026
IGI Report Number **LG766649405**
Description **LABORATORY GROWN DIAMOND**
Shape and Cutting Style **PEAR BRILLIANT**
Measurements **12.40 X 8.15 X 5.12 MM**
GRADING RESULTS
Carat Weight **3.01 CARATS**
Color Grade **F**
Clarity Grade **VS 2**
ADDITIONAL GRADING INFORMATION
Polish **EXCELLENT**
Symmetry **EXCELLENT**
Fluorescence **NONE**
Inscription(s) **IGI LG766649405**

Comments: This Laboratory Grown Diamond was created by Chemical Vapor Deposition (CVD) growth process. Type IIa

PROPORTIONS



CLARITY CHARACTERISTICS



KEY TO SYMBOLS
Red symbols indicate internal characteristics.
Green symbols indicate external characteristics.

COLOR

| | | | | | | | | | |
|---|---|---|---|---|---|---|-------|------------|-------|
| D | E | F | G | H | I | J | Faint | Very Light | Light |
|---|---|---|---|---|---|---|-------|------------|-------|

CLARITY

| | | | | | |
|----------|---------------------|-----------------------------|------------------------|-------------------|------------------|
| FL | IF | VS ¹⁻² | VS ¹⁻² | SI ¹⁻² | I ¹⁻³ |
| Flawless | Internally Flawless | Very Very Slightly Included | Very Slightly Included | Slightly Included | Included |

