



ELECTRONIC COPY

LG766646543
Report verification at igi.org



January 24, 2026
IGI Report Number **LG766646543**
Description **LABORATORY GROWN DIAMOND**
Shape and Cutting Style **CUT CORNERED
RECTANGULAR MIXED CUT**
Measurements **8.37 X 6.47 X 4.36 MM**
GRADING RESULTS
Carat Weight **2.29 CARATS**
Color Grade **FANCY VIVID YELLOW**
Clarity Grade **VVS 2**

LABORATORY GROWN DIAMOND REPORT

January 24, 2026
IGI Report Number **LG766646543**
Description **LABORATORY GROWN DIAMOND**
Shape and Cutting Style **CUT CORNERED RECTANGULAR
MIXED CUT**
Measurements **8.37 X 6.47 X 4.36 MM**

GRADING RESULTS

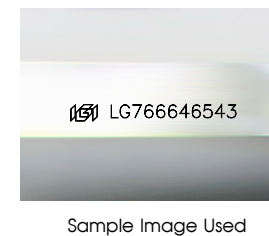
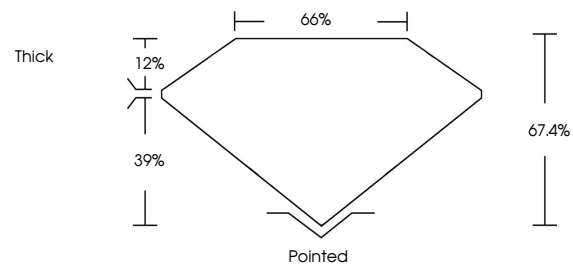
Carat Weight **2.29 CARATS**
Color Grade **FANCY VIVID YELLOW**
Clarity Grade **VVS 2**

ADDITIONAL GRADING INFORMATION

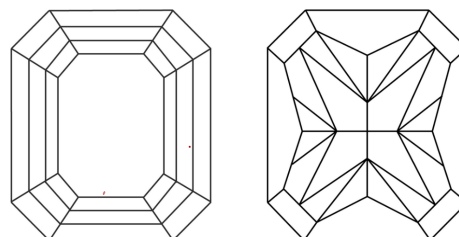
Polish **EXCELLENT**
Symmetry **EXCELLENT**
Fluorescence **NONE**
Inscription(s) **IGI LG766646543**

Comments: This Laboratory Grown Diamond was created by Chemical Vapor Deposition (CVD) growth process.

PROPORTIONS



CLARITY CHARACTERISTICS



KEY TO SYMBOLS

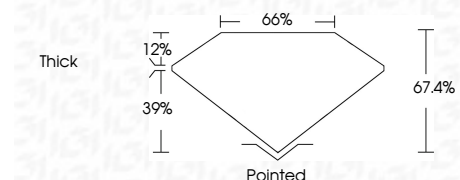
Red symbols indicate internal characteristics.
Green symbols indicate external characteristics.

COLOR

D E F G H I J Faint Very Light Light

CLARITY

FL	IF	VVS ¹⁻²	VS ¹⁻²	SI ¹⁻²	I ¹⁻³
Flawless	Internally Flawless	Very Very Slightly Included	Very Slightly Included	Slightly Included	Included



ADDITIONAL GRADING INFORMATION

Polish **EXCELLENT**
Symmetry **EXCELLENT**
Fluorescence **NONE**
Inscription(s) **IGI LG766646543**
Comments: This Laboratory Grown Diamond was created by Chemical Vapor Deposition (CVD) growth process.



January 24, 2026
IGI Report No LG766646543
CUT CORNERED RECT. MIXED CUT
2.29 CARATS
FANCY VIVID YELLOW
VVS 2
8.37 X 6.47 X 4.36 MM
67.4%
65%
Thick
Pointed
EXCELLENT
EXCELLENT
NONE
IGI LG766646543
Comments: This Laboratory Grown Diamond was created by Chemical Vapor Deposition (CVD) growth process.