



ELECTRONIC COPY

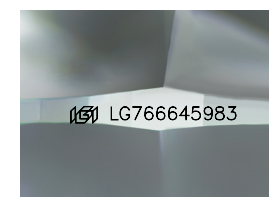
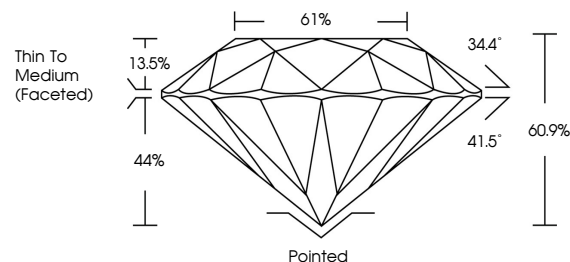
LG766645983
Report verification at igi.org



April 8, 2026
IGI Report Number: LG766645983
Description: LABORATORY GROWN DIAMOND
Shape and Cutting Style: ROUND BRILLIANT
Measurements: 7.20 - 7.27 X 4.41 MM
GRADING RESULTS
Carat Weight: 1.41 CARAT
Color Grade: E
Clarity Grade: VVS 2
Cut Grade: EXCELLENT

April 8, 2026
IGI Report Number: LG766645983
Description: LABORATORY GROWN DIAMOND
Shape and Cutting Style: ROUND BRILLIANT
Measurements: 7.20 - 7.27 X 4.41 MM

PROPORTIONS

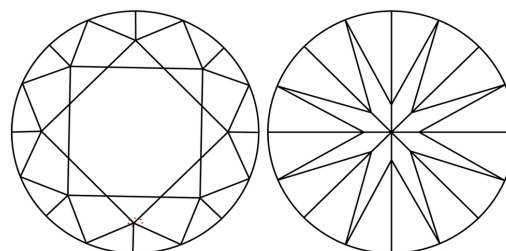


Sample Image Used

GRADING RESULTS

Carat Weight: 1.41 CARAT
Color Grade: E
Clarity Grade: VVS 2
Cut Grade: EXCELLENT

CLARITY CHARACTERISTICS



KEY TO SYMBOLS

Red symbols indicate internal characteristics.
Green symbols indicate external characteristics.

ADDITIONAL GRADING INFORMATION

Polish: VERY GOOD
Symmetry: VERY GOOD
Fluorescence: NONE
Inscription(s): IGI LG766645983

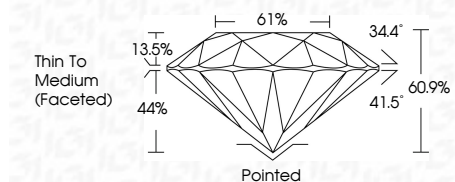
Comments: As Grown - No indication of post-growth treatment.
This Laboratory Grown Diamond was created by High Pressure High Temperature (HPHT) growth process.
Type II

COLOR

D E F G H I J Faint Very Light Light

CLARITY

FL IF VVS 1-2 VS 1-2 SI 1-2 I 1-3
Flawless Internally Flawless Very Very Slightly Included Very Slightly Included Slightly Included Included



ADDITIONAL GRADING INFORMATION

Polish: VERY GOOD
Symmetry: VERY GOOD
Fluorescence: NONE
Inscription(s): IGI LG766645983
Comments: As Grown - No indication of post-growth treatment.
This Laboratory Grown Diamond was created by High Pressure High Temperature (HPHT) growth process.
Type II



April 8, 2026
IGI Report No LG766645983
ROUND BRILLIANT
7.20 - 7.27 X 4.41 MM
1.41 CARAT
E
VVS 2
EXCELLENT
60.9%
61%
Thin To Medium (Faceted)
Pointed
VERY GOOD
VERY GOOD
VERY GOOD
NONE
IGI LG766645983
Comments: As Grown - No indication of post-growth treatment.
This Laboratory Grown Diamond was created by High Pressure High Temperature (HPHT) growth process.
Type II