



ELECTRONIC COPY

LG766645625
Report verification at igi.org



February 25, 2026

IGI Report Number **LG766645625**

Description **LABORATORY GROWN DIAMOND**

Shape and Cutting Style **ROUND BRILLIANT**

Measurements **6.60 - 6.63 X 3.97 MM**

GRADING RESULTS

Carat Weight **1.07 CARAT**

Color Grade **D**

Clarity Grade **VS 2**

Cut Grade **VERY GOOD**

February 25, 2026

IGI Report Number **LG766645625**

Description **LABORATORY GROWN DIAMOND**

Shape and Cutting Style **ROUND BRILLIANT**

Measurements **6.60 - 6.63 X 3.97 MM**

GRADING RESULTS

Carat Weight **1.07 CARAT**

Color Grade **D**

Clarity Grade **VS 2**

Cut Grade **VERY GOOD**

ADDITIONAL GRADING INFORMATION

Polish **GOOD**

Symmetry **GOOD**

Fluorescence **NONE**

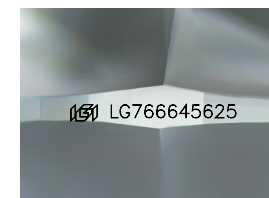
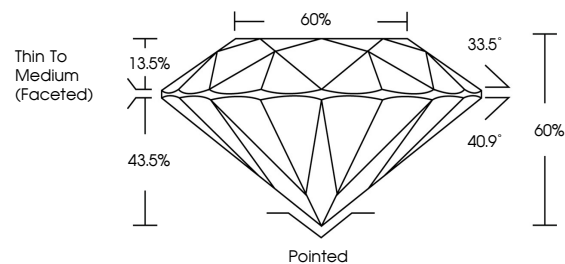
Inscription(s) **IGI LG766645625**

Comments: As Grown - No indication of post-growth treatment.

This Laboratory Grown Diamond was created by High Pressure High Temperature (HPHT) growth process.

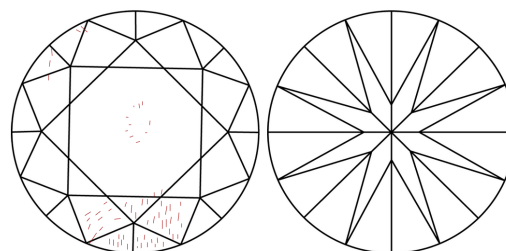
Type II

PROPORTIONS



Sample Image Used

CLARITY CHARACTERISTICS



KEY TO SYMBOLS

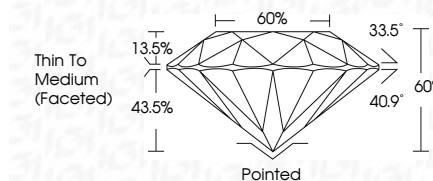
Red symbols indicate internal characteristics.
Green symbols indicate external characteristics.

COLOR

D E F G H I J Faint Very Light Light

CLARITY

FL	IF	VS ¹⁻²	VS ¹⁻²	SI ¹⁻²	I ¹⁻³
Flawless	Internally Flawless	Very Very Slightly Included	Very Slightly Included	Slightly Included	Included



ADDITIONAL GRADING INFORMATION

Polish **GOOD**

Symmetry **GOOD**

Fluorescence **NONE**

Inscription(s) **IGI LG766645625**

Comments: As Grown - No indication of post-growth treatment.

This Laboratory Grown Diamond was created by High Pressure High Temperature (HPHT) growth process.

Type II



IGI



February 25, 2026
IGI Report No LG766645625
ROUND BRILLIANT
1.07 CARAT
Color Grade **D**
Clarity Grade **VS 2**
Cut Grade **VERY GOOD**
Depth **60%**
Table **60%**
Girdle **Thin To Medium (Faceted)**
Culet **Pointed**
Polish **GOOD**
Symmetry **GOOD**
Fluorescence **NONE**
Inscriptions(s) **IGI LG766645625**
Comments: As Grown - No indication of post-growth treatment.
This Laboratory Grown Diamond was created by High Pressure High Temperature (HPHT) growth process.
Type II