



**ELECTRONIC COPY**

LG766645370  
Report verification at igi.org



February 18, 2026  
IGI Report Number **LG766645370**  
Description **LABORATORY GROWN DIAMOND**  
Shape and Cutting Style **CUT CORNERED  
RECTANGULAR MIXED CUT**  
Measurements **9.91 X 7.07 X 4.60 MM**  
**GRADING RESULTS**  
Carat Weight **3.04 CARATS**  
Color Grade **FANCY INTENSE YELLOW**  
Clarity Grade **VS 1**

February 18, 2026  
IGI Report Number **LG766645370**  
Description **LABORATORY GROWN DIAMOND**  
Shape and Cutting Style **CUT CORNERED RECTANGULAR  
MIXED CUT**  
Measurements **9.91 X 7.07 X 4.60 MM**

**GRADING RESULTS**

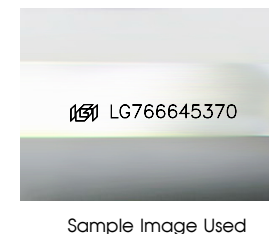
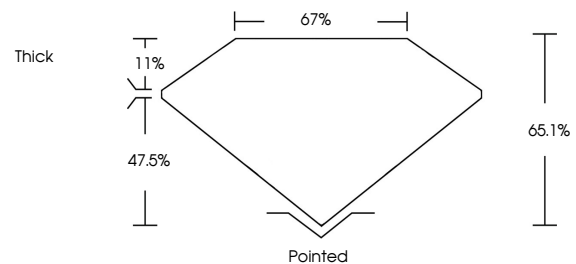
Carat Weight **3.04 CARATS**  
Color Grade **FANCY INTENSE YELLOW**  
Clarity Grade **VS 1**

**ADDITIONAL GRADING INFORMATION**

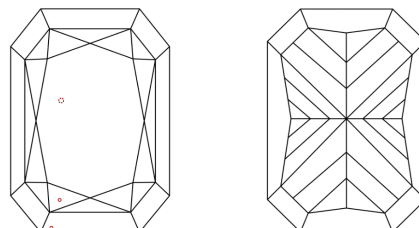
Polish **EXCELLENT**  
Symmetry **EXCELLENT**  
Fluorescence **NONE**  
Inscription(s) **IGI LG766645370**

Comments: This Laboratory Grown Diamond was created by Chemical Vapor Deposition (CVD) growth process.

**PROPORTIONS**



**CLARITY CHARACTERISTICS**



**KEY TO SYMBOLS**

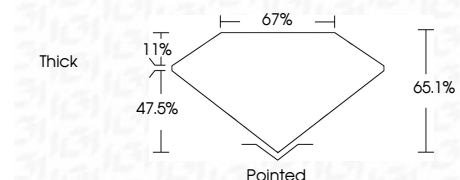
Red symbols indicate internal characteristics.  
Green symbols indicate external characteristics.

**COLOR**

D E F G H I J Faint Very Light Light

**CLARITY**

FL	IF	VS <sup>1-2</sup>	VS <sup>1-2</sup>	SI <sup>1-2</sup>	I <sup>1-3</sup>
Flawless	Internally Flawless	Very Very Slightly Included	Very Slightly Included	Slightly Included	Included



**ADDITIONAL GRADING INFORMATION**

Polish **EXCELLENT**  
Symmetry **EXCELLENT**  
Fluorescence **NONE**  
Inscription(s) **IGI LG766645370**  
Comments: This Laboratory Grown Diamond was created by Chemical Vapor Deposition (CVD) growth process.



February 18, 2026  
IGI Report No LG766645370  
CUT CORNERED RECT. MIXED CUT  
9.91 X 7.07 X 4.60 MM  
3.04 CARATS  
FANCY INTENSE YELLOW  
VS 1  
65.1%  
67%  
Thick  
Pointed  
EXCELLENT  
EXCELLENT  
NONE  
IGI LG766645370  
Comments: This Laboratory Grown Diamond was created by Chemical Vapor Deposition (CVD) growth process.