



**ELECTRONIC COPY**

LG766644514  
Report verification at [igi.org](http://igi.org)



February 13, 2026

IGI Report Number **LG766644514**

Description **LABORATORY GROWN DIAMOND**

Shape and Cutting Style **ROUND BRILLIANT**

Measurements **6.38 - 6.43 X 4.07 MM**

**GRADING RESULTS**

Carat Weight **1.04 CARAT**

Color Grade **D**

Clarity Grade **INTERNALLY FLAWLESS**

Cut Grade **VERY GOOD**

February 13, 2026  
IGI Report Number **LG766644514**  
Description **LABORATORY GROWN DIAMOND**  
Shape and Cutting Style **ROUND BRILLIANT**  
Measurements **6.38 - 6.43 X 4.07 MM**

**GRADING RESULTS**

Carat Weight **1.04 CARAT**

Color Grade **D**

Clarity Grade **INTERNALLY FLAWLESS**

Cut Grade **VERY GOOD**

**ADDITIONAL GRADING INFORMATION**

Polish **EXCELLENT**

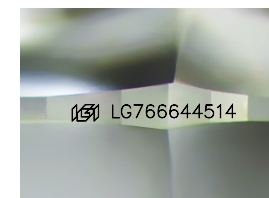
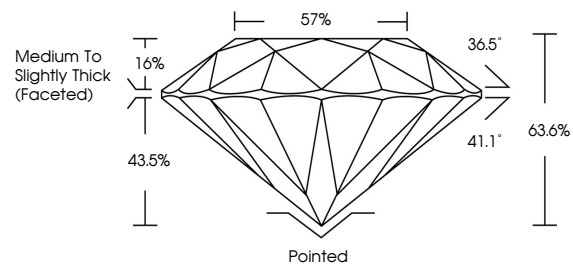
Symmetry **EXCELLENT**

Fluorescence **NONE**

Inscription(s) **LG766644514**

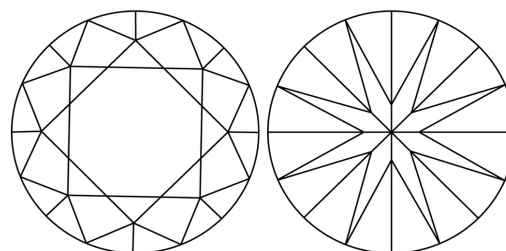
Comments: As Grown - No indication of post-growth treatment.  
This Laboratory Grown Diamond was created by High Pressure High Temperature (HPHT) growth process.  
Type II

**PROPORTIONS**



Sample Image Used

**CLARITY CHARACTERISTICS**



**KEY TO SYMBOLS**

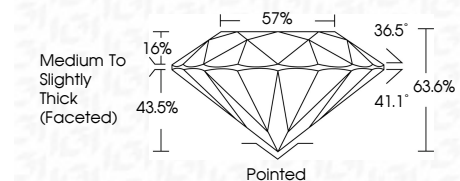
Red symbols indicate internal characteristics.  
Green symbols indicate external characteristics.

**COLOR**

D E F G H I J Faint Very Light Light

**CLARITY**

FL	IF	VS <sup>1-2</sup>	VS <sup>1-2</sup>	SI <sup>1-2</sup>	I <sup>1-3</sup>
Flawless	Internally Flawless	Very Very Slightly Included	Very Slightly Included	Slightly Included	Included



**ADDITIONAL GRADING INFORMATION**

Polish **EXCELLENT**

Symmetry **EXCELLENT**

Fluorescence **NONE**

Inscription(s) **LG766644514**

Comments: As Grown - No indication of post-growth treatment.  
This Laboratory Grown Diamond was created by High Pressure High Temperature (HPHT) growth process.  
Type II



**IGI**



February 13, 2026  
IGI Report No **LG766644514**  
**ROUND BRILLIANT**  
**6.38 - 6.43 X 4.07 MM**  
Carat Weight **1.04 CARAT**  
Color Grade **D**  
Clarity Grade **VERY GOOD**  
Cut Grade **VERY GOOD**  
Depth **63.6%**  
Table **57%**  
Girdle **Medium To Slightly Thick (Faceted)**  
Culet **Pointed**  
Polish **EXCELLENT**  
Symmetry **EXCELLENT**  
Fluorescence **NONE**  
Inscription(s) **LG766644514**  
Comments: As Grown - No indication of post-growth treatment.  
This Laboratory Grown Diamond was created by High Pressure High Temperature (HPHT) growth process.  
Type II