



ELECTRONIC COPY

LG766644291
Report verification at igi.org



February 12, 2026

IGI Report Number **LG766644291**

Description **LABORATORY GROWN DIAMOND**

Shape and Cutting Style **ROUND BRILLIANT**

Measurements **6.98 - 7.03 X 4.21 MM**

GRADING RESULTS

Carat Weight **1.27 CARAT**

Color Grade **E**

Clarity Grade **VS 1**

Cut Grade **EXCELLENT**

February 12, 2026

IGI Report Number **LG766644291**

Description **LABORATORY GROWN DIAMOND**

Shape and Cutting Style **ROUND BRILLIANT**

Measurements **6.98 - 7.03 X 4.21 MM**

GRADING RESULTS

Carat Weight **1.27 CARAT**

Color Grade **E**

Clarity Grade **VS 1**

Cut Grade **EXCELLENT**

ADDITIONAL GRADING INFORMATION

Polish **VERY GOOD**

Symmetry **VERY GOOD**

Fluorescence **NONE**

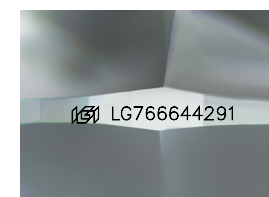
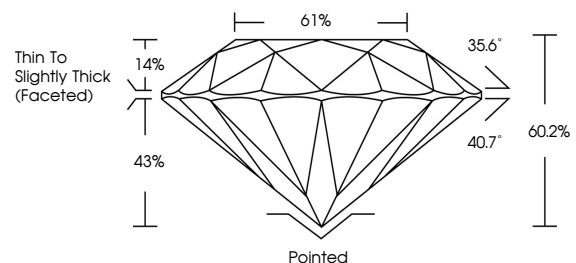
Inscription(s) **IGI LG766644291**

Comments: As Grown - No indication of post-growth treatment.

This Laboratory Grown Diamond was created by High Pressure High Temperature (HPHT) growth process.

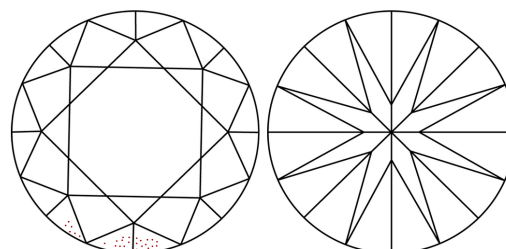
Type II

PROPORTIONS



Sample Image Used

CLARITY CHARACTERISTICS



KEY TO SYMBOLS

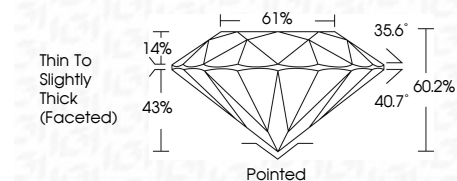
Red symbols indicate internal characteristics.
Green symbols indicate external characteristics.

COLOR

D E F G H I J Faint Very Light Light

CLARITY

FL	IF	VS ¹⁻²	VS ¹⁻²	SI ¹⁻²	I ¹⁻³
Flawless	Internally Flawless	Very Very Slightly Included	Very Slightly Included	Slightly Included	Included



ADDITIONAL GRADING INFORMATION

Polish **VERY GOOD**

Symmetry **VERY GOOD**

Fluorescence **NONE**

Inscription(s) **IGI LG766644291**

Comments: As Grown - No indication of post-growth treatment.

This Laboratory Grown Diamond was created by High Pressure High Temperature (HPHT) growth process.

Type II



IGI



February 12, 2026
IGI Report No LG766644291
ROUND BRILLIANT
6.98 - 7.03 X 4.21 MM
Carat Weight 1.27 CARAT
Color Grade E
Clarity Grade VS 1
Cut Grade EXCELLENT
Depth 60.2%
Table 14%
Girdle Thin To Slightly Thick (Faceted)
Culet Pointed
Polish VERY GOOD
Symmetry VERY GOOD
Fluorescence NONE
Inscriptions(s) IGI LG766644291
Comments: As Grown - No indication of post-growth treatment.
This Laboratory Grown Diamond was created by High Pressure High Temperature (HPHT) growth process.
Type II