



ELECTRONIC COPY

LG766643771
Report verification at igi.org



February 3, 2026
IGI Report Number **LG766643771**
Description **LABORATORY GROWN DIAMOND**
Shape and Cutting Style **ROSE CUT**
Measurements **8.52 X 8.64 X 3.74 MM**
GRADING RESULTS
Carat Weight **2.53 CARATS**
Color Grade **FANCY LIGHT GRAY**
Clarity Grade **VS 1**

February 3, 2026
IGI Report Number **LG766643771**
Description **LABORATORY GROWN DIAMOND**
Shape and Cutting Style **ROSE CUT**
Measurements **8.52 X 8.64 X 3.74 MM**

GRADING RESULTS

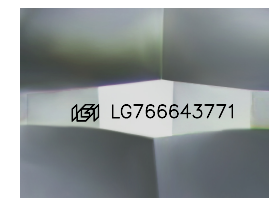
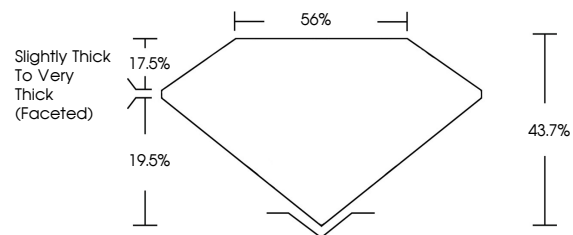
Carat Weight **2.53 CARATS**
Color Grade **FANCY LIGHT GRAY**
Clarity Grade **VS 1**

ADDITIONAL GRADING INFORMATION

Polish **EXCELLENT**
Symmetry **EXCELLENT**
Fluorescence **VERY SLIGHT**
Inscription(s) **IGI LG766643771**

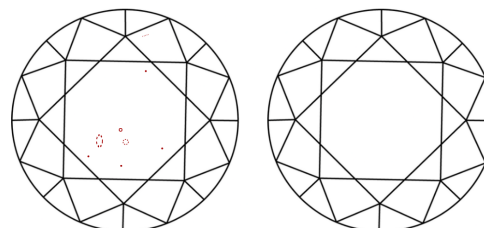
Comments: This Laboratory Grown Diamond was created by Chemical Vapor Deposition (CVD) growth process. Indications of post-growth treatment.

PROPORTIONS



Sample Image Used

CLARITY CHARACTERISTICS



KEY TO SYMBOLS

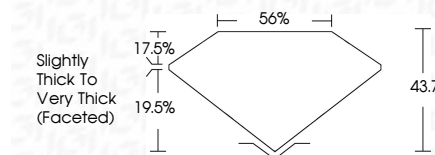
Red symbols indicate internal characteristics.
Green symbols indicate external characteristics.

COLOR

D E F G H I J Faint Very Light Light

CLARITY

FL	IF	VS ¹⁻²	VS ¹⁻²	SI ¹⁻²	I ¹⁻³
Flawless	Internally Flawless	Very Very Slightly Included	Very Slightly Included	Slightly Included	Included



ADDITIONAL GRADING INFORMATION

Polish **EXCELLENT**
Symmetry **EXCELLENT**
Fluorescence **VERY SLIGHT**
Inscription(s) **IGI LG766643771**
Comments: This Laboratory Grown Diamond was created by Chemical Vapor Deposition (CVD) growth process. Indications of post-growth treatment.



February 3, 2026
IGI Report No. **LG766643771**
ROSE CUT
2.53 CARATS
Carat Weight **FANCY LIGHT GRAY**
Color Grade **VS 1**
Depth **43.7%**
Table **56%**
Girdle **Slightly Thick To Very Thick (Faceted)**
Culet **EXCELLENT**
Polish **EXCELLENT**
Symmetry **EXCELLENT**
Fluorescence **VERY SLIGHT**
Inscription(s) **IGI LG766643771**
Comments: This Laboratory Grown Diamond was created by Chemical Vapor Deposition (CVD) growth process. Indications of post-growth treatment.