



**ELECTRONIC COPY**

LG766631943  
Report verification at igi.org



January 19, 2026  
IGI Report Number **LG766631943**  
Description **LABORATORY GROWN DIAMOND**  
Shape and Cutting Style **ROUND BRILLIANT**  
Measurements **10.75 - 10.83 X 6.55 MM**  
**GRADING RESULTS**  
Carat Weight **4.71 CARATS**  
Color Grade **E**  
Clarity Grade **VVS 2**  
Cut Grade **IDEAL**

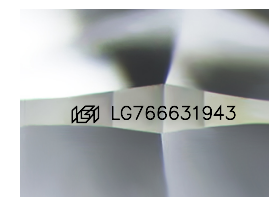
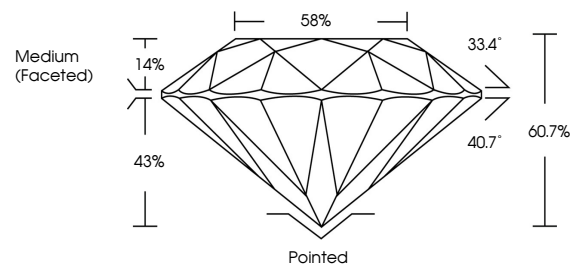
January 19, 2026  
IGI Report Number **LG766631943**  
Description **LABORATORY GROWN DIAMOND**  
Shape and Cutting Style **ROUND BRILLIANT**  
Measurements **10.75 - 10.83 X 6.55 MM**  
**GRADING RESULTS**  
Carat Weight **4.71 CARATS**  
Color Grade **E**  
Clarity Grade **VVS 2**  
Cut Grade **IDEAL**

**ADDITIONAL GRADING INFORMATION**

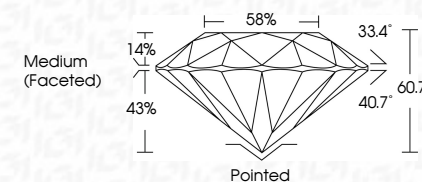
Polish **EXCELLENT**  
Symmetry **EXCELLENT**  
Fluorescence **NONE**  
Inscription(s) **LG766631943**

Comments: This Laboratory Grown Diamond was created by Chemical Vapor Deposition (CVD) growth process.  
Type IIa

**PROPORTIONS**



Sample Image Used



**COLOR**

D E F G H I J Faint Very Light Light

**CLARITY**

FL	IF	VS <sup>1-2</sup>	VS <sup>1-2</sup>	SI <sup>1-2</sup>	I <sup>1-3</sup>
Flawless	Internally Flawless	Very Very Slightly Included	Very Slightly Included	Slightly Included	Included

**ADDITIONAL GRADING INFORMATION**

Polish **EXCELLENT**  
Symmetry **EXCELLENT**  
Fluorescence **NONE**  
Inscription(s) **LG766631943**  
Comments: This Laboratory Grown Diamond was created by Chemical Vapor Deposition (CVD) growth process.  
Type IIa



**IGI**



January 19, 2026  
IGI Report No **LG766631943**  
**ROUND BRILLIANT**  
**10.75 - 10.83 X 6.55 MM**  
Carat Weight **4.71 CARATS**  
Color Grade **E**  
Clarity Grade **VVS 2**  
Depth **IDEAL**  
Table **60.7%**  
Girdle **40.7%**  
Pavilion Angle **43%**  
Crown Angle **33.4°**  
Cut **Pointed**  
Polish **EXCELLENT**  
Symmetry **EXCELLENT**  
Fluorescence **NONE**  
Inscriptions(s) **LG766631943**  
Comments: This Laboratory Grown Diamond was created by Chemical Vapor Deposition (CVD) growth process.  
Type IIa