



**ELECTRONIC COPY**

LG766628948  
Report verification at igi.org



January 23, 2026  
IGI Report Number **LG766628948**  
Description **LABORATORY GROWN DIAMOND**  
Shape and Cutting Style **MARQUISE BRILLIANT**  
Measurements **13.92 X 7.22 X 4.65 MM**  
**GRADING RESULTS**  
Carat Weight **2.71 CARATS**  
Color Grade **E**  
Clarity Grade **INTERNALLY FLAWLESS**

January 23, 2026  
IGI Report Number **LG766628948**  
Description **LABORATORY GROWN DIAMOND**  
Shape and Cutting Style **MARQUISE BRILLIANT**  
Measurements **13.92 X 7.22 X 4.65 MM**

**GRADING RESULTS**

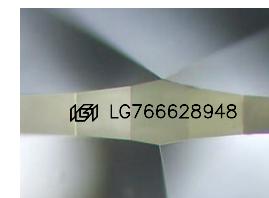
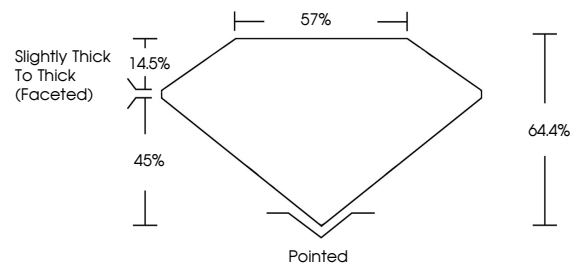
Carat Weight **2.71 CARATS**  
Color Grade **E**  
Clarity Grade **INTERNALLY FLAWLESS**

**ADDITIONAL GRADING INFORMATION**

Polish **EXCELLENT**  
Symmetry **EXCELLENT**  
Fluorescence **NONE**  
Inscription(s) **IGI LG766628948**

Comments: This Laboratory Grown Diamond was created by Chemical Vapor Deposition (CVD) growth process. Type IIa

**PROPORTIONS**



Sample Image Used

**CLARITY CHARACTERISTICS**



**KEY TO SYMBOLS**

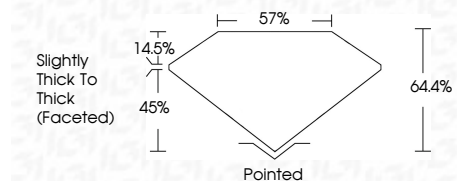
Red symbols indicate internal characteristics.  
Green symbols indicate external characteristics.

**COLOR**

D E F G H I J Faint Very Light Light

**CLARITY**

FL	IF	VS <sup>1-2</sup>	VS <sup>1-2</sup>	SI <sup>1-2</sup>	I <sup>1-3</sup>
Flawless	Internally Flawless	Very Very Slightly Included	Very Slightly Included	Slightly Included	Included



**ADDITIONAL GRADING INFORMATION**

Polish **EXCELLENT**  
Symmetry **EXCELLENT**  
Fluorescence **NONE**  
Inscription(s) **IGI LG766628948**  
Comments: This Laboratory Grown Diamond was created by Chemical Vapor Deposition (CVD) growth process. Type IIa



January 23, 2026  
IGI Report No **LG766628948**  
**MARQUISE BRILLIANT**  
13.92 X 7.22 X 4.65 MM  
2.71 CARATS  
E  
Color Grade  
Clarity Grade  
Table  
Depth  
Girdle  
Slightly Thick To Thick (Faceted)  
64.4%  
57%  
Pointed  
Culet  
Polish  
Symmetry  
Fluorescence  
Inscription(s)  
**EXCELLENT**  
**EXCELLENT**  
**NONE**  
**IGI LG766628948**  
Comments: This Laboratory Grown Diamond was created by Chemical Vapor Deposition (CVD) growth process. Type IIa