



**ELECTRONIC COPY**

## LABORATORY GROWN DIAMOND REPORT

LG766627512  
Report verification at [igi.org](https://igi.org)

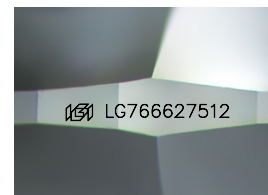
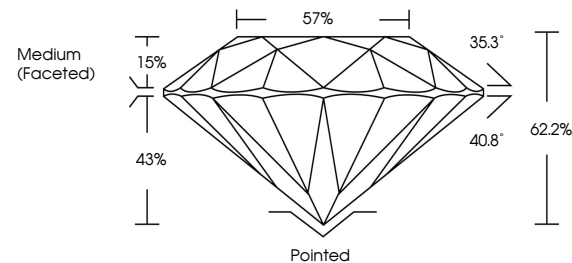
|                         |                          |
|-------------------------|--------------------------|
| January 19, 2026        |                          |
| IGI Report Number       | LG766627512              |
| Description             | LABORATORY GROWN DIAMOND |
| Shape and Cutting Style | ROUND BRILLIANT          |
| Measurements            | 8.04 - 8.08 X 5.01 MM    |
| GRADING RESULTS         |                          |
| Carat Weight            | 2.02 CARATS              |
| Color Grade             | D                        |
| Clarity Grade           | VS 1                     |
| Cut Grade               | IDEAL                    |

### ADDITIONAL GRADING INFORMATION

|                |                 |
|----------------|-----------------|
| Polish         | EXCELLENT       |
| Symmetry       | EXCELLENT       |
| Fluorescence   | NONE            |
| Inscription(s) | 161 LG766627512 |

Comments: This Laboratory Grown Diamond was created by Chemical Vapor Deposition (CVD) growth process.  
Type IIa

## PROPORTIONS



Sample Image Used

## COLOR

D E F G H I J Faint Very Light Light

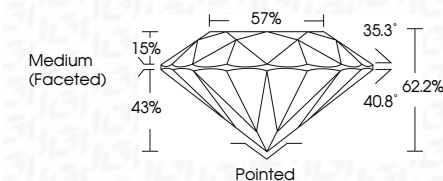
## CLARITY

| FL       | IF                  | VVS <sup>1-2</sup>          | VS <sup>1-2</sup>      | SI <sup>1-2</sup> | I <sup>1-3</sup> |
|----------|---------------------|-----------------------------|------------------------|-------------------|------------------|
| Flawless | Internally Flawless | Very Very Slightly Included | Very Slightly Included | Slightly Included | Included         |

## LABORATORY GROWN DIAMOND REPORT



|                         |                          |
|-------------------------|--------------------------|
| January 19, 2026        |                          |
| IGI Report Number       | LG766627512              |
| Description             | LABORATORY GROWN DIAMOND |
| Shape and Cutting Style | ROUND BRILLIANT          |
| Measurements            | 8.04 - 8.08 X 5.01 MM    |
| GRADING RESULTS         |                          |
| Carat Weight            | 2.02 CARATS              |
| Color Grade             | D                        |
| Clarity Grade           | VS 1                     |
| Cut Grade               | IDEAL                    |



### ADDITIONAL GRADING INFORMATION

|   |  |
|---|--|
| Polish  | EXCELLENT  |
| Symmetry  | EXCELLENT  |
| Fluorescence  | NONE   |
| Inscription(s)  |  LG766627512 |
| <p>Comments: This Laboratory Grown Diamond was created by Chemical Vapor Deposition (CVD) growth process.</p> <p>Type IIa</p> |  |



© IGI 2020, International Gemological Institute

FD - 10 20



THIS DOCUMENT WAS PRODUCED WITH THE FOLLOWING SECURITY MEASURES: SPECIAL DOCUMENT PAPER, INK SCREENS, WATERMARK, BACKGROUND DESIGNS, HOLOGRAM, AND OTHER SECURITY FEATURES NOT LISTED AND DO EXCEED DOCUMENT SECURITY INDUSTRY GUIDELINES.

**www.igi.org**

January 19, 2026  
GI Report No LG766627512  
ROUND BRILLIANT

|                 |                       |             |             |               |           |       |       |                  |          |           |           |              |                  |
|-----------------|-----------------------|-------------|-------------|---------------|-----------|-------|-------|------------------|----------|-----------|-----------|--------------|------------------|
| ROUND BRILLIANT | 0.04 - 0.09 G 5.01 MM | 2.02 CARATS | D           | VSI           | IDEAL     | 62.2% | 57%   | Medium (Faceted) | Polished | Excellent | Excellent | None         | 481 (2744477810) |
|                 | Color Weight          |             | Color Grade | Clarity Grade | Cut Grade | Depth | Table | Girdle           | Culet    | Polish    | Symmetry  | Fluorescence |                  |

**Comments:**  
This Laboratory Grown Diamond was  
created by Chemical Vapor Deposition  
(CVD) growth process.