



**ELECTRONIC COPY**

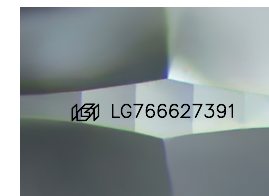
LG766627391  
Report verification at igi.org



January 20, 2026  
IGI Report Number **LG766627391**  
Description **LABORATORY GROWN DIAMOND**  
Shape and Cutting Style **SQUARE CUSHION MODIFIED BRILLIANT**  
Measurements **8.06 X 7.85 X 5.15 MM**

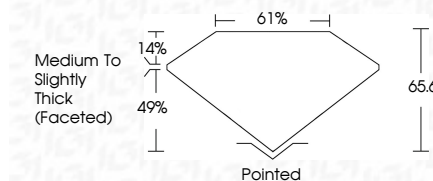
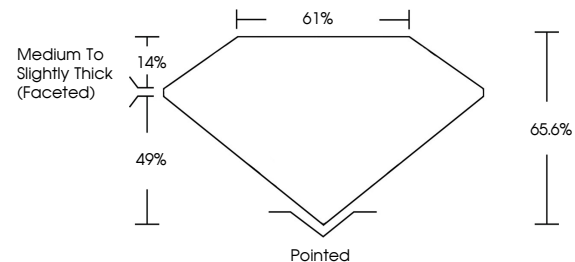
**GRADING RESULTS**

Carat Weight **2.41 CARATS**  
Color Grade **D**  
Clarity Grade **VVS 2**



Sample Image Used

**PROPORTIONS**



**ADDITIONAL GRADING INFORMATION**

Polish **EXCELLENT**  
Symmetry **EXCELLENT**  
Fluorescence **NONE**  
Inscription(s) **IGI LG766627391**  
Comments: This Laboratory Grown Diamond was created by Chemical Vapor Deposition (CVD) growth process. Type IIa



**COLOR**

D E F G H I J Faint Very Light Light

**CLARITY**

| FL       | IF                  | VVS <sup>1-2</sup>          | VS <sup>1-2</sup>      | SI <sup>1-2</sup> | I <sup>1-3</sup> |
|----------|---------------------|-----------------------------|------------------------|-------------------|------------------|
| Flawless | Internally Flawless | Very Very Slightly Included | Very Slightly Included | Slightly Included | Included         |



January 20, 2026  
IGI Report No LG766627391  
**SQUARE CUSHION MODIFIED BRILLIANT**  
8.06 X 7.85 X 5.15 MM  
2.41 CARATS  
Color Grade **D**  
Clarity Grade **VVS 2**  
Depth **65.6%**  
Table **61%**  
Girdle **Medium to Slightly Thick (Faceted)**  
Culet **Pointed**  
Polish **EXCELLENT**  
Symmetry **EXCELLENT**  
Fluorescence **NONE**  
Inscription(s) **IGI LG766627391**

Comments: This Laboratory Grown Diamond was created by Chemical Vapor Deposition (CVD) growth process. Type IIa