

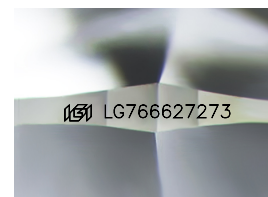
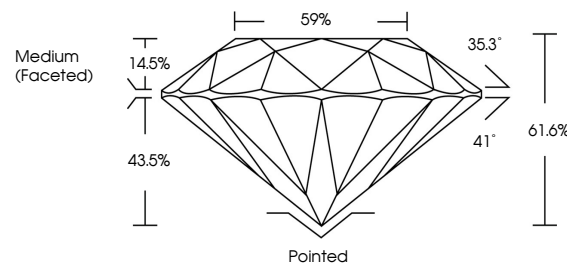


ELECTRONIC COPY

LABORATORY GROWN DIAMOND REPORT

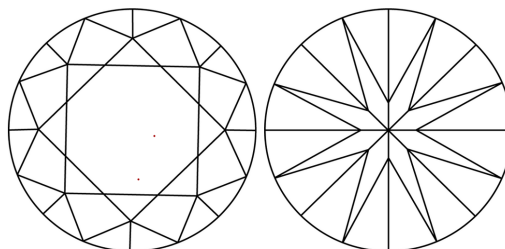
LG766627273
Report verification at lgi.org

PROPORTIONS



Sample Image Used

CLARITY CHARACTERISTICS



KEY TO SYMBOLS

Red symbols indicate internal characteristics.
Green symbols indicate external characteristics.

COLOR

D E F G H I J Faint Very Light Light

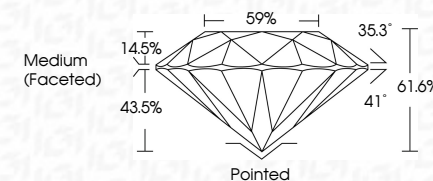
CLARITY

FL	IF	VVS ¹⁻²	VS ¹⁻²	SI ¹⁻²	I ¹⁻³
Flawless	Internally Flawless	Very Very Slightly Included	Very Slightly Included	Slightly Included	Included

LABORATORY GROWN DIAMOND REPORT



Date	January 18, 2026
IGI Report Number	LG766627273
Description	LABORATORY GROWN DIAMOND
Shape and Cutting Style	ROUND BRILLIANT
Measurements	6.49 - 6.53 X 4.01 MM
GRADING RESULTS	
Carat Weight	1.05 CARAT
Color Grade	D
Clarity Grade	VVS 2
Cut Grade	IDEAL



ADDITIONAL GRADING INFORMATION

Polish	EXCELLENT
Symmetry	EXCELLENT
Fluorescence	NONE
Inscription(s)	LG LG766627273
Comments: This Laboratory Grown Diamond was created by Chemical Vapor Deposition (CVD) growth process.	
Type IIa	



© IGI 2020, International Gemological Institute

FD - 10 20



THIS DOCUMENT WAS PRODUCED WITH THE FOLLOWING SECURITY MEASURES: SPECIAL DOCUMENT PAPER, INK SCREENS, WATERMARK, BACKGROUND DESIGNS, HOLOGRAM AND OTHER SECURITY FEATURES NOT LISTED AND DO EXCEED DOCUMENT SECURITY INDUSTRY GUIDELINES

www.igi.org

January 18, 2026
GI Report No LG766627273
ROUND BRILLIANT

5.49 - 6.53 X 4.01 MM

5.49 - 6.53 X 4.01 MM
Carat Weight 1.05 CARAT

Catal Weight	1.00 Catal
Color Grade	D

Clarity Grade	WS 2
Very Good	
Good	
Fair	
Poor	
Very Poor	

Out Grade	IDEAL
41.49%	

Depth	61.6%
Table	59%

Girdle

7
4
1
0

Culet	Pointed
Polish	EXCELLENT

Excellent

Excellent

Fluorescence	NONE
Subscription(s)	1801 G766627273

Prescription(s)	LG/00027273

Comments:
This Laboratory Grown Diamond was

created by Chemical Vapor Deposition (CVD) growth process.

Type IIa