



ELECTRONIC COPY

LABORATORY GROWN DIAMOND REPORT

LG766625119
Report verification at igi.org

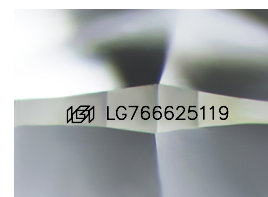
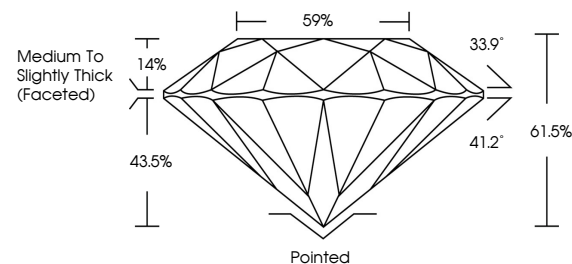
January 17, 2026	
IGI Report Number	LG766625119
Description	LABORATORY GROWN DIAMOND
Shape and Cutting Style	ROUND BRILLIANT
Measurements	8.12 - 8.17 X 5.00 MM
GRADING RESULTS	
Carat Weight	2.04 CARATS
Color Grade	E
Clarity Grade	VS 1
Cut Grade	IDEAL

ADDITIONAL GRADING INFORMATION

Polish	EXCELLENT
Symmetry	EXCELLENT
Fluorescence	NONE
Inscription(s)	15 LG766625119

Comments: This Laboratory Grown Diamond was created by Chemical Vapor Deposition (CVD) growth process.
Type IIa

PROPORTIONS



Sample Image Used

COLOR

D E F G H I J Faint Very Light Light

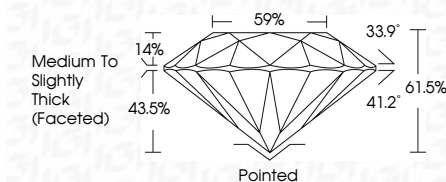
CLARITY

FL	IF	VVS ¹⁻²	VS ¹⁻²	SI ¹⁻²	I ¹⁻³
Flawless	Internally Flawless	Very Very Slightly Included	Very Slightly Included	Slightly Included	Included

LABORATORY GROWN DIAMOND REPORT



January 17, 2026	
IGI Report Number	LG766625119
Description	LABORATORY GROWN DIAMOND
Shape and Cutting Style	ROUND BRILLIANT
Measurements	8.12 - 8.17 X 5.00 MM
GRADING RESULTS	
Carat Weight	2.04 CARATS
Color Grade	E
Clarity Grade	VS 1
Cut Grade	IDEAL



ADDITIONAL GRADING INFORMATION

Polish	EXCELLENT
Symmetry	EXCELLENT
Fluorescence	NONE
Inscription(s)	 LG766625119
<p>Comments: This Laboratory Grown Diamond was created by Chemical Vapor Deposition (CVD) growth process.</p> <p>Type IIa</p>	



© IGI 2020, International Gemological Institute

FD - 10 20



THIS DOCUMENT WAS PRODUCED WITH THE FOLLOWING SECURITY MEASURES: SPECIAL DOCUMENT PAPER, INK SCREENS, WATERMARK, BACKGROUND DESIGNS, HOLOGRAM AND OTHER SECURITY FEATURES NOT LISTED AND DO EXCEED DOCUMENT SECURITY INDUSTRY GUIDELINE

www.igi.org

January 17, 2026
 IGI Report No LG76
 SOUNDING BRILLIANT

ROUND BRILLIANT	1.12 - 8.17 X 5.00 MM		2.04 CARATS	
	Carat Weight		E	
	Color Grade			
	Clarity Grade		Vs 1	
	Cut Grade		IDEAL	
	Depth		61.5%	
	Table		59%	
	Girdle		Medium To Slightly Thick (Faceted)	
	Culet		Pointed	
	Polish		EXCELLENT	
			Symmetry	EXCELLENT
			Fluorescence	NONE

Comments:
This Laboratory Grown Diamond was
created by Chemical Vapor Deposition
(CVD) growth process.