



ELECTRONIC COPY

LG766624855
Report verification at igi.org



January 17, 2026

IGI Report Number **LG766624855**

Description **LABORATORY GROWN DIAMOND**

Shape and Cutting Style **PRINCESS CUT**

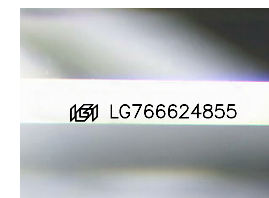
Measurements **5.76 X 5.64 X 3.93 MM**

GRADING RESULTS

Carat Weight **1.18 CARAT**

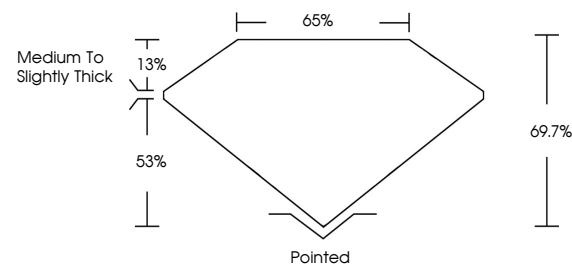
Color Grade **D**

Clarity Grade **VVS 2**

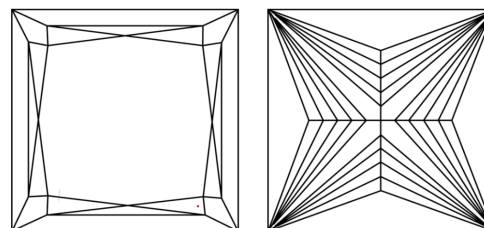


Sample Image Used

PROPORTIONS



CLARITY CHARACTERISTICS



KEY TO SYMBOLS

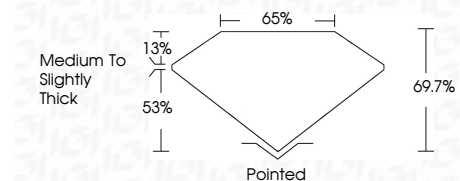
Red symbols indicate internal characteristics.
Green symbols indicate external characteristics.

COLOR

D E F G H I J Faint Very Light Light

CLARITY

FL	IF	VVS ¹⁻²	VS ¹⁻²	SI ¹⁻²	I ¹⁻³
Flawless	Internally Flawless	Very Very Slightly Included	Very Slightly Included	Slightly Included	Included



ADDITIONAL GRADING INFORMATION

Polish **EXCELLENT**

Symmetry **EXCELLENT**

Fluorescence **NONE**

Inscription(s) **IGI LG766624855**

Comments: This Laboratory Grown Diamond was created by Chemical Vapor Deposition (CVD) growth process. Type IIa



IGI



January 17, 2026
IGI Report No. LG766624855
PRINCESS CUT

1.18 CARAT
D

5.76 X 5.64 X 3.93 MM
Color Grade
Clarity Grade
Table
Depth
Girdle

13%
53%
65%
69.7%

Medium to Slightly Thick

Pointed
EXCELLENT
EXCELLENT
NONE
IGI LG766624855

Comments: This Laboratory Grown Diamond was created by Chemical Vapor Deposition (CVD) growth process. Type IIa