



ELECTRONIC COPY

LG766622727
Report verification at igi.org



January 26, 2026

IGI Report Number **LG766622727**

Description **LABORATORY GROWN DIAMOND**

Shape and Cutting Style **SQUARE CUSHION MODIFIED
BRILLIANT**

Measurements **6.47 X 6.26 X 4.18 MM**

GRADING RESULTS

Carat Weight **1.42 CARAT**

Color Grade **FANCY VIVID BLUE**

Clarity Grade **VVS 2**

LABORATORY GROWN DIAMOND REPORT

January 26, 2026

IGI Report Number **LG766622727**

Description **LABORATORY GROWN DIAMOND**

Shape and Cutting Style **SQUARE CUSHION MODIFIED
BRILLIANT**

Measurements **6.47 X 6.26 X 4.18 MM**

GRADING RESULTS

Carat Weight **1.42 CARAT**

Color Grade **FANCY VIVID BLUE**

Clarity Grade **VVS 2**

ADDITIONAL GRADING INFORMATION

Polish **EXCELLENT**

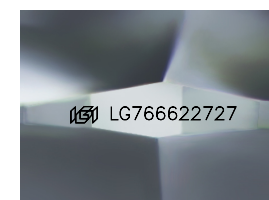
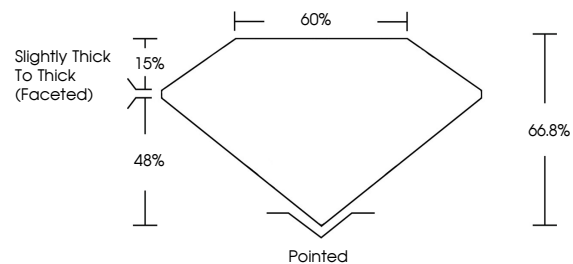
Symmetry **EXCELLENT**

Fluorescence **NONE**

Inscription(s) **IGI LG766622727**

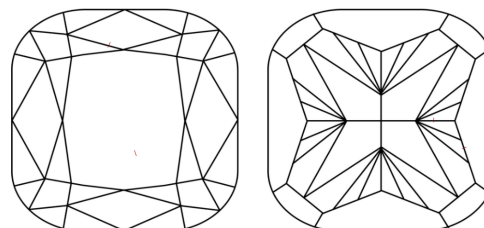
Comments: This Laboratory Grown Diamond was created by High Pressure High Temperature (HPHT) growth process. Indications of post-growth treatment.

PROPORTIONS



Sample Image Used

CLARITY CHARACTERISTICS



KEY TO SYMBOLS

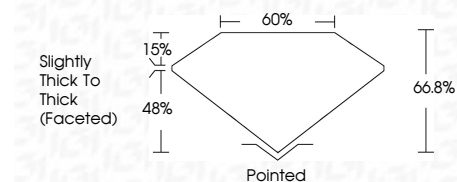
Red symbols indicate internal characteristics.
Green symbols indicate external characteristics.

COLOR

D E F G H I J Faint Very Light Light

CLARITY

FL	IF	VVS ¹⁻²	VS ¹⁻²	SI ¹⁻²	I ¹⁻³
Flawless	Internally Flawless	Very Very Slightly Included	Very Slightly Included	Slightly Included	Included



ADDITIONAL GRADING INFORMATION

Polish **EXCELLENT**

Symmetry **EXCELLENT**

Fluorescence **NONE**

Inscription(s) **IGI LG766622727**

Comments: This Laboratory Grown Diamond was created by High Pressure High Temperature (HPHT) growth process. Indications of post-growth treatment.



IGI



January 26, 2026
IGI Report No LG766622727
SQUARE CUSHION MODIFIED BRILLIANT
6.47 X 6.26 X 4.18 MM
1.42 CARAT
FANCY VIVID BLUE
VVS 2
66.8%
48%
Slightly Thick To Thick (Faceted)
Pointed
EXCELLENT
EXCELLENT
NONE
IGI LG766622727

Comments: This Laboratory Grown Diamond was created by High Pressure High Temperature (HPHT) growth process. Indications of post-growth treatment.