

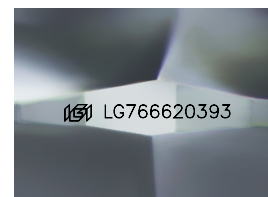
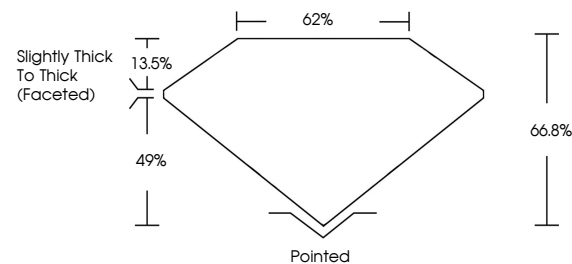


**ELECTRONIC COPY**

## LABORATORY GROWN DIAMOND REPORT

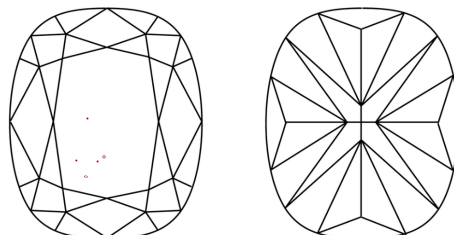
LG766620393  
Report verification at [igi.org](https://igi.org)

## PROPORTIONS



Sample Image Used

## CLARITY CHARACTERISTICS



## KEY TO SYMBOLS

Red symbols indicate internal characteristics.  
Green symbols indicate external characteristics.

## COLOR

D E F G H I J Faint Very Light Light

## CLARITY

FL	IF	VVS <sup>1-2</sup>	VS <sup>1-2</sup>	SI <sup>1-2</sup>	I <sup>1-3</sup>
Flawless	Internally Flawless	Very Very Slightly Included	Very Slightly Included	Slightly Included	Included

## LABORATORY GROWN DIAMOND REPORT



January 20, 2026

IGI Report Number **LG766620393**Description **LABORATORY GROWN DIAMOND**

Shape and Cutting Style **CUSHION MODIFIED  
BRILLIANT**

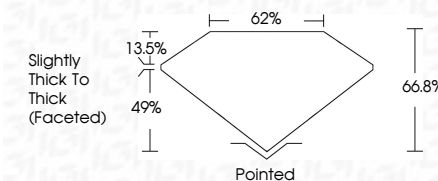
Measurements **9.31 X 7.33 X 4.90 MM**

## GRADING RESULTS

Carat Weight **2.60 CARATS**

Color Grade	D
-------------	---

Clarity Grade VS 1



### ADDITIONAL GRADING INFORMATION

Polish **EXCELLENT**Symmetry **EXCELLENT**Fluorescence **NONE**Inscription(s)  LG766620393

Comments: This Laboratory Grown Diamond was created by Chemical Vapor Deposition (CVD) growth process.  
Type IIa



© IGI 2020, International Gemological Institute

FD - 10 20



THIS DOCUMENT WAS PRODUCED WITH THE FOLLOWING SECURITY MEASURES: SPECIAL DOCUMENT PAPER, INK SCREENS, WATERMARK, BACKGROUND DESIGNS, HOLOGRAM AND OTHER SECURITY FEATURES NOT LISTED AND DO EXCEED DOCUMENT SECURITY INDUSTRY GUIDELINES

**www.igi.org**

January 20, 2026	2.40 CARATS		VS 1		Pointed Excellent Excellent None #69 LG7642898
GJ Report No LG76428983	66.6%		62%		
CUSSION MODIFIED BRILLIANT	Slightly Thick to Thick (Faceted)				
3.1 X 1.7 X 3.3 X 4.90 MM					
Carat Weight					
Color Grade	Clarity Grade	Depth	Gable	Cut	Comments: This is a Very Good Diamond was created by Chemical Vapor Deposition (CVD) growth process. Type IIA
				Polish	
				Symmetry	
				Fluorescence	
				Inscriptions(s)	