



**ELECTRONIC COPY**

LG766619963  
Report verification at igi.org



February 9, 2026

IGI Report Number **LG766619963**

Description **LABORATORY GROWN DIAMOND**

Shape and Cutting Style **CUT CORNERED  
RECTANGULAR MODIFIED  
BRILLIANT**

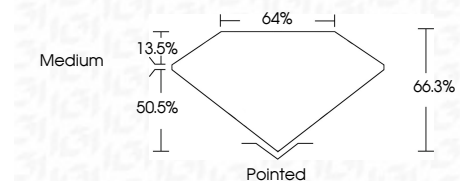
Measurements **9.53 X 6.92 X 4.59 MM**

**GRADING RESULTS**

Carat Weight **2.60 CARATS**

Color Grade **F**

Clarity Grade **VVS 2**



**ADDITIONAL GRADING INFORMATION**

Polish **EXCELLENT**

Symmetry **EXCELLENT**

Fluorescence **NONE**

Inscription(s) **IGI LG766619963**

Comments: As Grown - No indication of post-growth treatment.

This Laboratory Grown Diamond was created by High Pressure High Temperature (HPHT) growth process. Type II



**IGI**

February 9, 2026

IGI Report Number **LG766619963**

Description **LABORATORY GROWN DIAMOND**

Shape and Cutting Style **CUT CORNERED RECTANGULAR  
MODIFIED BRILLIANT**

Measurements **9.53 X 6.92 X 4.59 MM**

**GRADING RESULTS**

Carat Weight **2.60 CARATS**

Color Grade **F**

Clarity Grade **VVS 2**

**ADDITIONAL GRADING INFORMATION**

Polish **EXCELLENT**

Symmetry **EXCELLENT**

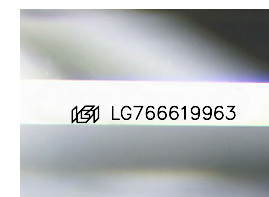
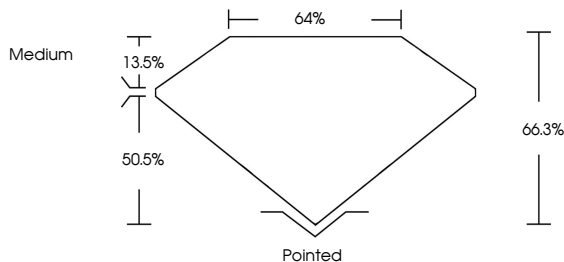
Fluorescence **NONE**

Inscription(s) **IGI LG766619963**

Comments: As Grown - No indication of post-growth treatment.

This Laboratory Grown Diamond was created by High Pressure High Temperature (HPHT) growth process. Type II

**PROPORTIONS**



Sample Image Used

**COLOR**

D E F G H I J Faint Very Light Light

**CLARITY**

| FL       | IF                  | VVS <sup>1-2</sup>          | VS <sup>1-2</sup>      | SI <sup>1-2</sup> | I <sup>1-3</sup> |
|----------|---------------------|-----------------------------|------------------------|-------------------|------------------|
| Flawless | Internally Flawless | Very Very Slightly Included | Very Slightly Included | Slightly Included | Included         |



|  |                           |                                       |                       |             |   |       |       |       |        |         |           |           |      |                 |
|--|---------------------------|---------------------------------------|-----------------------|-------------|---|-------|-------|-------|--------|---------|-----------|-----------|------|-----------------|
| February 9, 2026   | IGI Report No LG766619963 | CUT CORNERED RECT. MODIFIED BRILLIANT | 9.53 X 6.92 X 4.59 MM | 2.60 CARATS | F | VVS 2 | 66.3% | 50.5% | Medium | Pointed | EXCELLENT | EXCELLENT | NONE | IGI LG766619963 |
| <p>Comments: As Grown - No indication of post-growth treatment. This Laboratory Grown Diamond was created by High Pressure High Temperature (HPHT) growth process. Type II</p> |                           |                                       |                       |             |   |       |       |       |        |         |           |           |      |                 |