



ELECTRONIC COPY

LG766619930
Report verification at igi.org

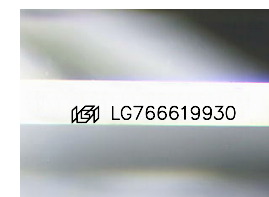


February 9, 2026
IGI Report Number **LG766619930**
Description **LABORATORY GROWN DIAMOND**
Shape and Cutting Style **CUT CORNERED
RECTANGULAR MODIFIED
BRILLIANT**

Measurements **8.62 X 5.86 X 4.07 MM**

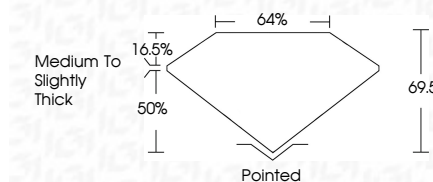
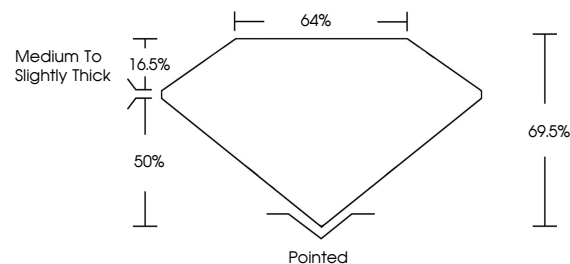
GRADING RESULTS

Carat Weight **1.82 CARAT**
Color Grade **D**
Clarity Grade **VVS 1**



Sample Image Used

PROPORTIONS



ADDITIONAL GRADING INFORMATION

Polish **EXCELLENT**
Symmetry **EXCELLENT**
Fluorescence **NONE**

Inscription(s) **IGI LG766619930**
Comments: As Grown - No indication of post-growth treatment.
This Laboratory Grown Diamond was created by High Pressure High Temperature (HPHT) growth process.
Type II



February 9, 2026
IGI Report No LG766619930
CUT CORNERED RECT. MODIFIED BRILLIANT
8.62 X 5.86 X 4.07 MM
1.82 CARAT
D
VVS 1
69.5%
44%
Medium to Slightly Thick
Pointed
EXCELLENT
EXCELLENT
NONE
IGI LG766619930

Comments: As Grown - No indication of post-growth treatment.
This Laboratory Grown Diamond was created by High Pressure High Temperature (HPHT) growth process.
Type II

February 9, 2026
IGI Report Number **LG766619930**
Description **LABORATORY GROWN DIAMOND**
Shape and Cutting Style **CUT CORNERED RECTANGULAR
MODIFIED BRILLIANT**
Measurements **8.62 X 5.86 X 4.07 MM**
GRADING RESULTS
Carat Weight **1.82 CARAT**
Color Grade **D**
Clarity Grade **VVS 1**

ADDITIONAL GRADING INFORMATION
Polish **EXCELLENT**
Symmetry **EXCELLENT**
Fluorescence **NONE**
Inscription(s) **IGI LG766619930**
Comments: As Grown - No indication of post-growth treatment.
This Laboratory Grown Diamond was created by High Pressure High Temperature (HPHT) growth process.
Type II