

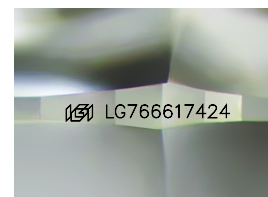
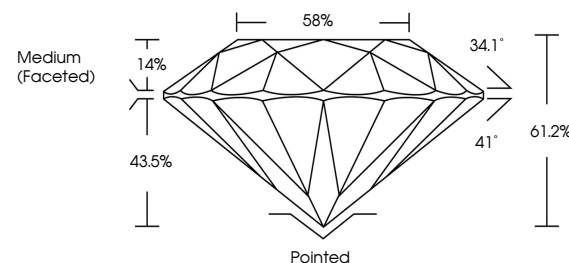


ELECTRONIC COPY

LABORATORY GROWN DIAMOND REPORT

LG766617424
Report verification at igi.org

PROPORTIONS



Sample Image Used

CLARITY CHARACTERISTICS



KEY TO SYMBOLS

Red symbols indicate internal characteristics.
Green symbols indicate external characteristics.



www.igi.org

LABORATORY GROWN DIAMOND REPORT



January 13, 2026

IGI Report Number **LG766617424**Description **LABORATORY GROWN DIAMOND**Shape and Cutting Style **ROUND BRILLIANT**

Measurements **9.47 - 9.50 X 5.80 MM**

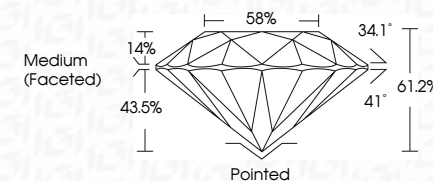
GRADING RESULTS

Carat Weight **3.21 CARATS**

Color Grade	D
-------------	---

Clarity Grade **INTERNALLY FLAWLESS**

Cut Grade **IDEAL**



ADDITIONAL GRADING INFORMATION

Polish **EXCELLENT**Symmetry **EXCELLENT**Fluorescence **NONE**Inscription(s) LG766617424

Comments: HEARTS & ARROWS

As Grown - No indication of post-growth treatment.

This Laboratory Grown Diamond was created by High Pressure High Temperature (HPHT) growth process.

Type II



January 13, 2026	
GJ Report No. GJ76617424	
ROUND BRILLIANT	
3.21 CARATS	
D	
Color Grade	I^F
Cut Weight	ID5AL
Carat Weight	0.12%
Clarity Grade	S91
Depth	Medium (Faceted)
Table	
Girdle	
Culet	Pointed
Pavil	EXCELLENT
Symmetry	EXCELLENT
Fluorescence	NONE
Inscriptions(s)	lgj LG76617424
Comments:	
LABORATORY GROWN DIAMOND	
As Grown - No Indication of post-growth treatment.	
The Laboratory Grown Diamond was created by High Pressure High temperature (HPHT) growth process.	

