



ELECTRONIC COPY

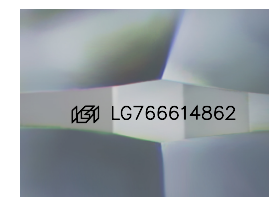
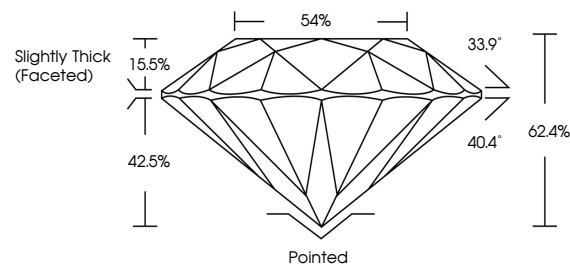
LG766614862
Report verification at igi.org



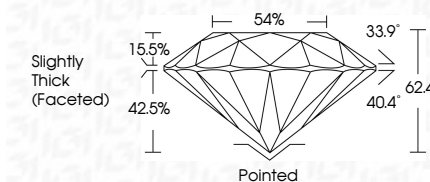
February 7, 2026
IGI Report Number **LG766614862**
Description **LABORATORY GROWN DIAMOND**
Shape and Cutting Style **ROUND BRILLIANT**
Measurements **9.61 - 9.68 X 6.03 MM**
GRADING RESULTS
Carat Weight **3.49 CARATS**
Color Grade **F**
Clarity Grade **VVS 1**
Cut Grade **EXCELLENT**

February 7, 2026
IGI Report Number **LG766614862**
Description **LABORATORY GROWN DIAMOND**
Shape and Cutting Style **ROUND BRILLIANT**
Measurements **9.61 - 9.68 X 6.03 MM**
GRADING RESULTS
Carat Weight **3.49 CARATS**
Color Grade **F**
Clarity Grade **VVS 1**
Cut Grade **EXCELLENT**

PROPORTIONS



Sample Image Used



ADDITIONAL GRADING INFORMATION
Polish **EXCELLENT**
Symmetry **EXCELLENT**
Fluorescence **NONE**
Inscription(s) **IGI LG766614862**

Comments: As Grown - No indication of post-growth treatment.
This Laboratory Grown Diamond was created by High Pressure High Temperature (HPHT) growth process.
Type II

COLOR

D E F G H I J Faint Very Light Light

CLARITY

FL	IF	VVS ¹⁻²	VS ¹⁻²	SI ¹⁻²	I ¹⁻³
Flawless	Internally Flawless	Very Very Slightly Included	Very Slightly Included	Slightly Included	Included

ADDITIONAL GRADING INFORMATION

Polish **EXCELLENT**
Symmetry **EXCELLENT**
Fluorescence **NONE**
Inscription(s) **IGI LG766614862**
Comments: As Grown - No indication of post-growth treatment.
This Laboratory Grown Diamond was created by High Pressure High Temperature (HPHT) growth process.
Type II



IGI



February 7, 2026
IGI Report No LG766614862
ROUND BRILLIANT
9.61 - 9.68 X 6.03 MM
3.49 CARATS
Color Grade **F**
Clarity Grade **VVS 1**
Depth **EXCELLENT**
Table **62.4%**
Girdle **54%**
Slightly Thick (Faceted)
Culet **Pointed**
Polish **EXCELLENT**
Symmetry **EXCELLENT**
Fluorescence **NONE**
Inscriptions(s) **IGI LG766614862**
Comments: As Grown - No indication of post-growth treatment.
This Laboratory Grown Diamond was created by High Pressure High Temperature (HPHT) growth process.
Type II