



ELECTRONIC COPY

LG766614848
Report verification at igi.org



February 6, 2026

IGI Report Number **LG766614848**

Description **LABORATORY GROWN DIAMOND**

Shape and Cutting Style **ROUND BRILLIANT**

Measurements **9.27 - 9.30 X 5.75 MM**

GRADING RESULTS

Carat Weight **3.00 CARATS**

Color Grade **E**

Clarity Grade **VVS 1**

Cut Grade **IDEAL**

February 6, 2026

IGI Report Number **LG766614848**

Description **LABORATORY GROWN DIAMOND**

Shape and Cutting Style **ROUND BRILLIANT**

Measurements **9.27 - 9.30 X 5.75 MM**

GRADING RESULTS

Carat Weight **3.00 CARATS**

Color Grade **E**

Clarity Grade **VVS 1**

Cut Grade **IDEAL**

ADDITIONAL GRADING INFORMATION

Polish **EXCELLENT**

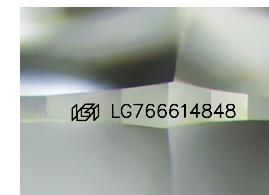
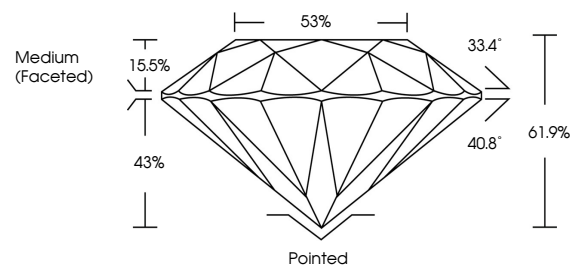
Symmetry **EXCELLENT**

Fluorescence **NONE**

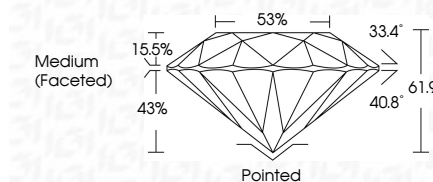
Inscription(s) **LG766614848**

Comments: HEARTS & ARROWS
As Grown - No indication of post-growth treatment.
This Laboratory Grown Diamond was created by High Pressure High Temperature (HPHT) growth process.
Type II

PROPORTIONS



Sample Image Used



COLOR

D E F G H I J Faint Very Light Light

CLARITY

FL	IF	VVS ¹⁻²	VS ¹⁻²	SI ¹⁻²	I ¹⁻³
Flawless	Internally Flawless	Very Very Slightly Included	Very Slightly Included	Slightly Included	Included

ADDITIONAL GRADING INFORMATION

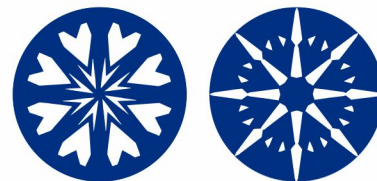
Polish **EXCELLENT**

Symmetry **EXCELLENT**

Fluorescence **NONE**

Inscription(s) **LG766614848**

Comments: HEARTS & ARROWS
As Grown - No indication of post-growth treatment.
This Laboratory Grown Diamond was created by High Pressure High Temperature (HPHT) growth process.
Type II



IGI

February 6, 2026	IGI Report No LG766614848	3.00 CARATS	E	Pointed
ROUND BRILLIANT	9.27 - 9.30 X 5.75 MM	Carat Weight	VVS 1	EXCELLENT
		Color Grade	IDEAL	EXCELLENT
		Clarity Grade	61.9%	NONE
		Cut Grade	88%	None (Faceted)
		Table		
		Girdle		
		Polish		
		Symmetry		
		Fluorescence		
		Inscriptions(s)		
		Comments: HEARTS & ARROWS		
		As Grown - No indication of post-growth treatment.		
		This Laboratory Grown Diamond was created by High Pressure High Temperature (HPHT) growth process.		
		Type II		