



ELECTRONIC COPY

LG766614340
Report verification at igi.org



February 2, 2026
IGI Report Number **LG766614340**
Description **LABORATORY GROWN DIAMOND**
Shape and Cutting Style **EMERALD CUT**
Measurements **15.40 X 10.68 X 7.12 MM**
GRADING RESULTS
Carat Weight **12.06 CARATS**
Color Grade **H**
Clarity Grade **VVS 1**

LABORATORY GROWN DIAMOND REPORT

February 2, 2026
IGI Report Number **LG766614340**
Description **LABORATORY GROWN DIAMOND**
Shape and Cutting Style **EMERALD CUT**
Measurements **15.40 X 10.68 X 7.12 MM**

GRADING RESULTS

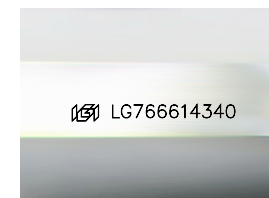
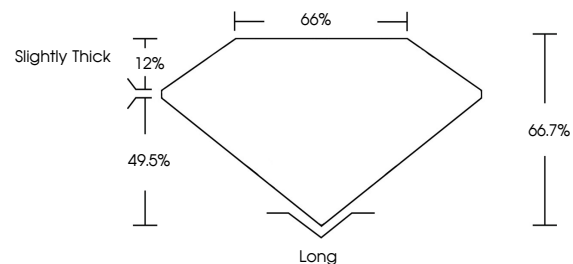
Carat Weight **12.06 CARATS**
Color Grade **H**
Clarity Grade **VVS 1**

ADDITIONAL GRADING INFORMATION

Polish **EXCELLENT**
Symmetry **EXCELLENT**
Fluorescence **NONE**
Inscription(s) **IGI LG766614340**

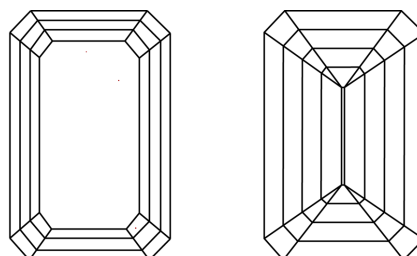
Comments: This Laboratory Grown Diamond was created by Chemical Vapor Deposition (CVD) growth process. Type IIa

PROPORTIONS



Sample Image Used

CLARITY CHARACTERISTICS



KEY TO SYMBOLS

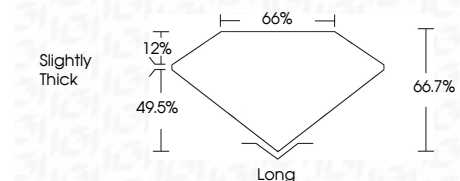
Red symbols indicate internal characteristics.
Green symbols indicate external characteristics.

COLOR

D E F G H I J Faint Very Light Light

CLARITY

FL	IF	VVS ¹⁻²	VS ¹⁻²	SI ¹⁻²	I ¹⁻³
Flawless	Internally Flawless	Very Very Slightly Included	Very Slightly Included	Slightly Included	Included



ADDITIONAL GRADING INFORMATION

Polish **EXCELLENT**
Symmetry **EXCELLENT**
Fluorescence **NONE**
Inscription(s) **IGI LG766614340**
Comments: This Laboratory Grown Diamond was created by Chemical Vapor Deposition (CVD) growth process. Type IIa



IGI



February 2, 2026
IGI Report No LG766614340
EMERALD CUT
15.40 X 10.68 X 7.12 MM
12.06 CARATS
H
Color Grade
VVS 1
Clarity Grade
66.7%
49.5%
table
depth
Slightly Thick
Long
Culet
EXCELLENT
Polish
EXCELLENT
Symmetry
NONE
Fluorescence
IGI LG766614340
Inscription(s)
Comments: This Laboratory Grown Diamond was created by Chemical Vapor Deposition (CVD) growth process. Type IIa