



January 14, 2026

IGI Report Number **LG766610878**

**ROUND BRILLIANT
LABORATORY GROWN DIAMOND
4.12 - 4.15 X 2.44 MM**

| | |
|----------------|------------------------|
| Carat Weight | 0.25 CARAT |
| Color Grade | D |
| Clarity Grade | VVS 2 |
| Cut Grade | EXCELLENT |
| Polish | EXCELLENT |
| Symmetry | EXCELLENT |
| Fluorescence | NONE |
| Inscription(s) | IGI LG766610878 |

Comments: This Laboratory Grown Diamond was created by Chemical Vapor Deposition (CVD) growth process. Type IIa

LABORATORY GROWN DIAMOND REPORT

January 14, 2026
IGI Report Number **LG766610878**
Description **LABORATORY GROWN DIAMOND**
Shape and Cutting Style **ROUND BRILLIANT**
Measurements **4.12 - 4.15 X 2.44 MM**

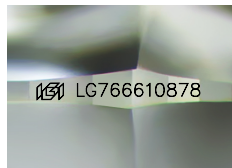
GRADING RESULTS

Carat Weight **0.25 CARAT**
Color Grade **D**
Clarity Grade **VVS 2**
Cut Grade **EXCELLENT**

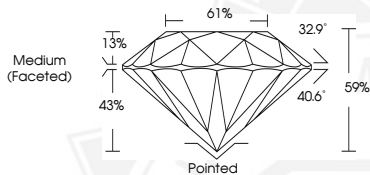
ADDITIONAL GRADING INFORMATION

Polish **EXCELLENT**
Symmetry **EXCELLENT**
Fluorescence **NONE**
Inscription(s) **IGI LG766610878**

Comments: This Laboratory Grown Diamond was created by Chemical Vapor Deposition (CVD) growth process. Type IIa



Sample Image Used



January 14, 2026

IGI Report Number **LG766610878**

**ROUND BRILLIANT
LABORATORY GROWN DIAMOND
4.12 - 4.15 X 2.44 MM**

| | |
|----------------|------------------------|
| Carat Weight | 0.25 CARAT |
| Color Grade | D |
| Clarity Grade | VVS 2 |
| Cut Grade | EXCELLENT |
| Polish | EXCELLENT |
| Symmetry | EXCELLENT |
| Fluorescence | NONE |
| Inscription(s) | IGI LG766610878 |

Comments: This Laboratory Grown Diamond was created by Chemical Vapor Deposition (CVD) growth process. Type IIa



THIS DOCUMENT WAS PRODUCED WITH THE FOLLOWING SECURITY MEASURES: SPECIAL DOCUMENT PAPER, INK SCREENS, WATERMARK, BACKGROUND DESIGNS, HOLOGRAM AND OTHER SECURITY FEATURES NOT LISTED AND DO EXCEED DOCUMENT SECURITY INDUSTRY GUIDELINES.