

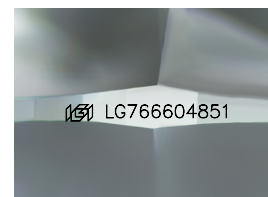
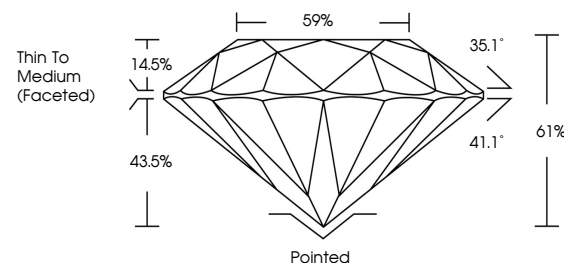


ELECTRONIC COPY

LABORATORY GROWN DIAMOND REPORT

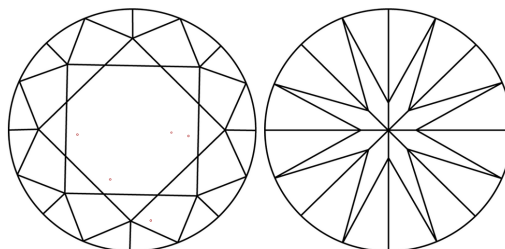
LG766604851
Report verification at igi.org

PROPORTIONS



Sample Image Used

CLARITY CHARACTERISTICS



KEY TO SYMBOLS

Red symbols indicate internal characteristics.
Green symbols indicate external characteristics.

COLOR

D E F G H I J Faint Very Light Light

CLARITY

FL	IF	VVS ¹⁻²	VS ¹⁻²	SI ¹⁻²	I ¹⁻³
Flawless	Internally Flawless	Very Very Slightly Included	Very Slightly Included	Slightly Included	Included



January 15, 2026

IGI Report Number **LG766604851**Description **LABORATORY GROWN DIAMOND**Shape and Cutting Style **ROUND BRILLIANT**

Measurements 6.61 - 6.65 X 4.04 MM

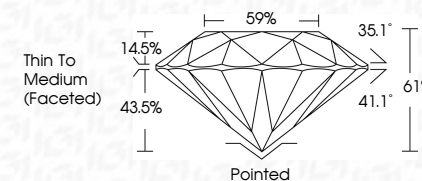
GRADING RESULTS

Carat Weight 1.09 CARAT

Color Grade D

Clarity Grade VS 1

Cut Grade **IDEAL**



ADDITIONAL GRADING INFORMATION

Polish **EXCELLENT**Symmetry **EXCELLENT**Fluorescence **NONE**Inscription(s) LG766604851

Comments: This Laboratory Grown Diamond was created by Chemical Vapor Deposition (CVD) growth process.
Type IIa



© IGI 2020, International Gemological Institute

FD - 10 20

www.igi.org

THIS DOCUMENT WAS PRODUCED WITH THE FOLLOWING SECURITY MEASURES: SPECIAL DOCUMENT PAPER, INK SCREENS, WATERMARK, BACKGROUND DESIGNS, HOLOGRAM AND OTHER SECURITY FEATURES NOT LISTED AND DO EXCEED DOCUMENT SECURITY INDUSTRY GUIDELINE

January 15, 2026	
G Report No. LG76604851	
ROUND BRILLIANT	
SIZE 6.61 - 6.65 X 4.04 MM	
Carat Weight 1.09 CARAT	
Color Grade D	
Clarity Grade VS 1	
Cut Grade IDEAL	
Depth 61%	
Table 59%	
Girdle Thin To Medium (Faceted)	
Culet Pointed	
Polish EXCELLENT	
Symmetry EXCELLENT	
Fluorescence NONE	
Inscriptions(s) #69 LG76604851	
Comments: This Laboratory Grown Diamond was originally sold as a Natural Vapor Deposition (VD) growth process. Type IIG	