



**ELECTRONIC COPY**

LG765639479  
Report verification at igi.org



January 17, 2026

IGI Report Number **LG765639479**

Description **LABORATORY GROWN DIAMOND**

Shape and Cutting Style **ROUND BRILLIANT**

Measurements **8.89 - 8.92 X 5.46 MM**

**GRADING RESULTS**

Carat Weight **2.66 CARATS**

Color Grade **D**

Clarity Grade **VVS 2**

Cut Grade **IDEAL**

January 17, 2026

IGI Report Number **LG765639479**

Description **LABORATORY GROWN DIAMOND**

Shape and Cutting Style **ROUND BRILLIANT**

Measurements **8.89 - 8.92 X 5.46 MM**

**GRADING RESULTS**

Carat Weight **2.66 CARATS**

Color Grade **D**

Clarity Grade **VVS 2**

Cut Grade **IDEAL**

**ADDITIONAL GRADING INFORMATION**

Polish **EXCELLENT**

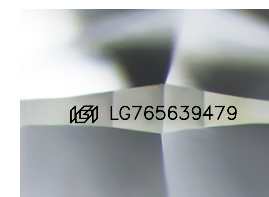
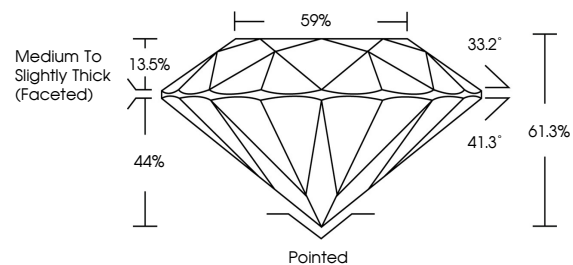
Symmetry **EXCELLENT**

Fluorescence **NONE**

Inscription(s) **IGI LG765639479**

Comments: This Laboratory Grown Diamond was created by Chemical Vapor Deposition (CVD) growth process. Type IIa

**PROPORTIONS**



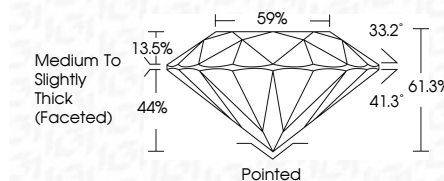
Sample Image Used

**COLOR**

D E F G H I J Faint Very Light Light

**CLARITY**

FL	IF	VS <sup>1-2</sup>	VS <sup>1-2</sup>	SI <sup>1-2</sup>	I <sup>1-3</sup>
Flawless	Internally Flawless	Very Very Slightly Included	Very Slightly Included	Slightly Included	Included



**ADDITIONAL GRADING INFORMATION**

Polish **EXCELLENT**

Symmetry **EXCELLENT**

Fluorescence **NONE**

Inscription(s) **IGI LG765639479**

Comments: This Laboratory Grown Diamond was created by Chemical Vapor Deposition (CVD) growth process. Type IIa



**IGI**



January 17, 2026	IGI Report No LG765639479	2.66 CARATS	D
ROUND BRILLIANT	8.89 - 8.92 X 5.46 MM	VVS 2	IDEAL
Carat Weight	Color Grade	Depth	61.3%
Clarity Grade	Cut Grade	Table	59%
Color Grade	IGI LG765639479	Medium To Slightly Thick (Faceted)	Pointed
Clarity Grade	EXCELLENT	EXCELLENT	NONE
Cut Grade	Symmetry	EXCELLENT	EXCELLENT
Fluorescence	Inscription(s)	IGI LG765639479	
Inscription(s)			

Comments: This Laboratory Grown Diamond was created by Chemical Vapor Deposition (CVD) growth process. Type IIa