



**LABORATORY GROWN DIAMOND REPORT**

January 19, 2026  
 IGI Report Number **LG765636288**  
 Description **LABORATORY GROWN DIAMOND**  
 Shape and Cutting Style **HEART BRILLIANT**  
 Measurements **5.59 X 5.80 X 3.42 MM**

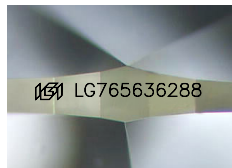
**GRADING RESULTS**

Carat Weight **0.63 CARAT**  
 Color Grade **F**  
 Clarity Grade **VS 2**

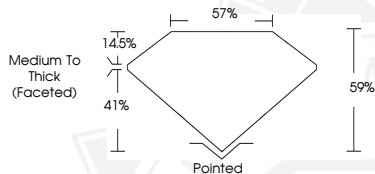
**ADDITIONAL GRADING INFORMATION**

Polish **EXCELLENT**  
 Symmetry **EXCELLENT**  
 Fluorescence **NONE**  
 Inscription(s) **IGI LG765636288**

Comments: This Laboratory Grown Diamond was created by Chemical Vapor Deposition (CVD) growth process. Type IIa



Sample Image Used



January 19, 2026  
 IGI Report Number **LG765636288**  
**HEART BRILLIANT**  
**LABORATORY GROWN DIAMOND**  
**5.59 X 5.80 X 3.42 MM**  
 Carat Weight **0.63 CARAT**  
 Color Grade **F**  
 Clarity Grade **VS 2**  
 Polish **EXCELLENT**  
 Symmetry **EXCELLENT**  
 Fluorescence **NONE**  
 Inscription(s) **IGI LG765636288**

Comments: This Laboratory Grown Diamond was created by Chemical Vapor Deposition (CVD) growth process. Type IIa



January 19, 2026  
 IGI Report Number **LG765636288**  
**HEART BRILLIANT**  
**LABORATORY GROWN DIAMOND**  
**5.59 X 5.80 X 3.42 MM**  
 Carat Weight **0.63 CARAT**  
 Color Grade **F**  
 Clarity Grade **VS 2**  
 Polish **EXCELLENT**  
 Symmetry **EXCELLENT**  
 Fluorescence **NONE**  
 Inscription(s) **IGI LG765636288**

Comments: This Laboratory Grown Diamond was created by Chemical Vapor Deposition (CVD) growth process. Type IIa



THIS DOCUMENT WAS PRODUCED WITH THE FOLLOWING SECURITY MEASURES: SPECIAL DOCUMENT PAPER, INK SCREENS, WATERMARK, BACKGROUND DESIGNS, HOLOGRAM AND OTHER SECURITY FEATURES NOT LISTED AND DO EXCEED DOCUMENT SECURITY INDUSTRY GUIDELINES.