



ELECTRONIC COPY

LG765634610
Report verification at igi.org



January 13, 2026
IGI Report Number **LG765634610**
Description **LABORATORY GROWN DIAMOND**
Shape and Cutting Style **CUT CORNERED
RECTANGULAR MODIFIED
BRILLIANT**

Measurements **8.07 X 5.89 X 3.89 MM**

GRADING RESULTS

Carat Weight **1.63 CARAT**
Color Grade **F**
Clarity Grade **VS 1**

January 13, 2026
IGI Report Number **LG765634610**
Description **LABORATORY GROWN DIAMOND**
Shape and Cutting Style **CUT CORNERED RECTANGULAR
MODIFIED BRILLIANT**
Measurements **8.07 X 5.89 X 3.89 MM**

GRADING RESULTS

Carat Weight **1.63 CARAT**
Color Grade **F**
Clarity Grade **VS 1**

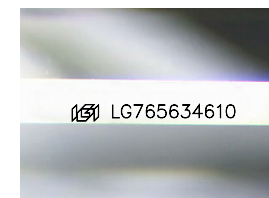
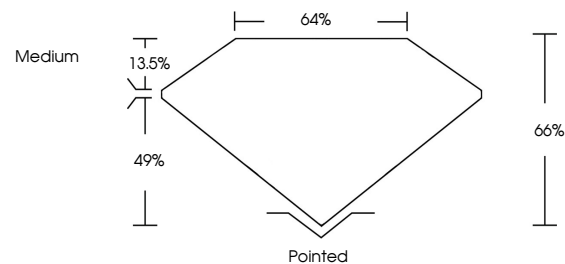
ADDITIONAL GRADING INFORMATION

Polish **EXCELLENT**
Symmetry **EXCELLENT**
Fluorescence **NONE**

Inscription(s) **IGI LG765634610**

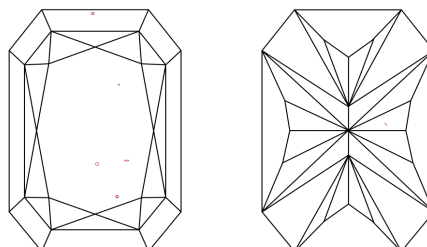
Comments: This Laboratory Grown Diamond was created by Chemical Vapor Deposition (CVD) growth process.
Type IIa

PROPORTIONS



Sample Image Used

CLARITY CHARACTERISTICS



KEY TO SYMBOLS

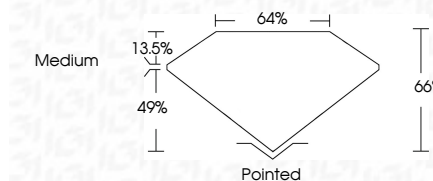
Red symbols indicate internal characteristics.
Green symbols indicate external characteristics.

COLOR

D E F G H I J Faint Very Light Light

CLARITY

FL	IF	VS ¹⁻²	VS ¹⁻²	SI ¹⁻²	I ¹⁻³
Flawless	Internally Flawless	Very Very Slightly Included	Very Slightly Included	Slightly Included	Included



ADDITIONAL GRADING INFORMATION

Polish **EXCELLENT**
Symmetry **EXCELLENT**
Fluorescence **NONE**
Inscription(s) **IGI LG765634610**
Comments: This Laboratory Grown Diamond was created by Chemical Vapor Deposition (CVD) growth process.
Type IIa



IGI



January 13, 2026
IGI Report No LG765634610
CUT CORNERED RECT. MODIFIED BRILLIANT
1.63 CARAT F
8.07 X 5.89 X 3.89 MM
Color Grade VS 1
Depth 66%
Table 13.5%
Girdle 49%
Medium
Pointed
EXCELLENT
EXCELLENT
NONE
IGI LG765634610

Comments: This Laboratory Grown Diamond was created by Chemical Vapor Deposition (CVD) growth process.
Type IIa