



March 27, 2026

IGI Report Number LG765633571
OVAL MODIFIED BRILLIANT
LABORATORY GROWN DIAMOND
6.55 X 4.71 X 2.82 MM

Carat Weight 0.70 CARAT
Color Grade FANCY INTENSE
YELLOW

Clarity Grade VS 1
Polish EXCELLENT
Symmetry VERY GOOD
Fluorescence VERY SLIGHT
Inscription(s) IGI LG765633571

Comments: This Laboratory Grown Diamond was created by Chemical Vapor Deposition (CVD) growth process. Indications of post-growth treatment.

LABORATORY GROWN DIAMOND REPORT

March 27, 2026
IGI Report Number **LG765633571**
Description **LABORATORY GROWN DIAMOND**
Shape and Cutting Style **OVAL MODIFIED BRILLIANT**
Measurements **6.55 X 4.71 X 2.82 MM**

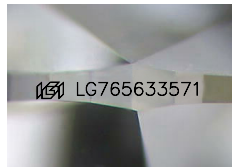
GRADING RESULTS

Carat Weight 0.70 CARAT
Color Grade FANCY INTENSE YELLOW
Clarity Grade VS 1

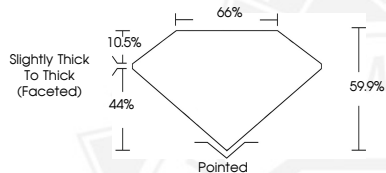
ADDITIONAL GRADING INFORMATION

Polish EXCELLENT
Symmetry VERY GOOD
Fluorescence VERY SLIGHT
Inscription(s) IGI LG765633571

Comments: This Laboratory Grown Diamond was created by Chemical Vapor Deposition (CVD) growth process. Indications of post-growth treatment.



Sample Image Used



March 27, 2026

IGI Report Number LG765633571
OVAL MODIFIED BRILLIANT
LABORATORY GROWN DIAMOND
6.55 X 4.71 X 2.82 MM

Carat Weight 0.70 CARAT
Color Grade FANCY INTENSE
YELLOW

Clarity Grade VS 1
Polish EXCELLENT
Symmetry VERY GOOD
Fluorescence VERY SLIGHT
Inscription(s) IGI LG765633571

Comments: This Laboratory Grown Diamond was created by Chemical Vapor Deposition (CVD) growth process. Indications of post-growth treatment.



THIS DOCUMENT WAS PRODUCED WITH THE FOLLOWING SECURITY MEASURES: SPECIAL DOCUMENT PAPER, INK SCREENS, WATERMARK, BACKGROUND DESIGNS, HOLOGRAM AND OTHER SECURITY FEATURES NOT LISTED AND DO EXCEED DOCUMENT SECURITY INDUSTRY GUIDELINES.