



ELECTRONIC COPY

LG765633556
Report verification at igi.org



March 23, 2026
IGI Report Number **LG765633556**
Description **LABORATORY GROWN DIAMOND**
Shape and Cutting Style **PEAR ROSE CUT**
Measurements **17.84 X 11.32 X 3.19 MM**
GRADING RESULTS
Carat Weight **5.84 CARATS**
Color Grade **F**
Clarity Grade **VVS 2**

LABORATORY GROWN DIAMOND REPORT

March 23, 2026
IGI Report Number **LG765633556**
Description **LABORATORY GROWN DIAMOND**
Shape and Cutting Style **PEAR ROSE CUT**
Measurements **17.84 X 11.32 X 3.19 MM**

GRADING RESULTS

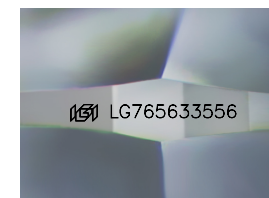
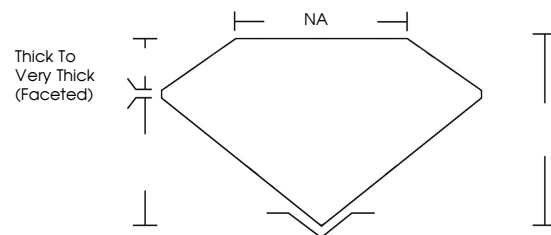
Carat Weight **5.84 CARATS**
Color Grade **F**
Clarity Grade **VVS 2**

ADDITIONAL GRADING INFORMATION

Polish **EXCELLENT**
Symmetry **EXCELLENT**
Fluorescence **NONE**
Inscription(s) **IGI LG765633556**

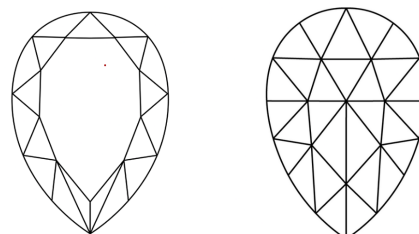
Comments: This Laboratory Grown Diamond was created by Chemical Vapor Deposition (CVD) growth process.
Type IIa

PROPORTIONS



Sample Image Used

CLARITY CHARACTERISTICS



KEY TO SYMBOLS

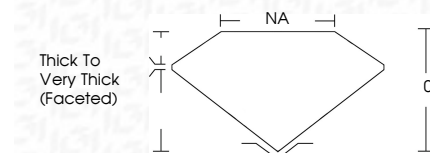
Red symbols indicate internal characteristics.
Green symbols indicate external characteristics.

COLOR

D E F G H I J Faint Very Light Light

CLARITY

FL	IF	VVS ¹⁻²	VS ¹⁻²	SI ¹⁻²	I ¹⁻³
Flawless	Internally Flawless	Very Very Slightly Included	Very Slightly Included	Slightly Included	Included



ADDITIONAL GRADING INFORMATION

Polish **EXCELLENT**
Symmetry **EXCELLENT**
Fluorescence **NONE**
Inscription(s) **IGI LG765633556**
Comments: This Laboratory Grown Diamond was created by Chemical Vapor Deposition (CVD) growth process.
Type IIa



March 23, 2026
IGI Report No LG765633556
PEAR ROSE CUT

5.84 CARATS
Carat Weight
Color Grade **F**
Clarity Grade **VVS 2**
Depth **0%**
Table **NA**
Girdle **Thick to Very Thick (Faceted)**

Culet
Polish **EXCELLENT**
Symmetry **EXCELLENT**
Fluorescence **NONE**
Inscription(s) **IGI LG765633556**

Comments: This Laboratory Grown Diamond was created by Chemical Vapor Deposition (CVD) growth process.
Type IIa