



ELECTRONIC COPY

LG765633437
Report verification at igi.org



March 12, 2026
IGI Report Number **LG765633437**

Description **LABORATORY GROWN DIAMOND**

Shape and Cutting Style **CUT CORNERED
RECTANGULAR MODIFIED
BRILLIANT**

Measurements **11.60 X 8.23 X 5.87 MM**

GRADING RESULTS

Carat Weight **5.02 CARATS**

Color Grade **FANCY INTENSE YELLOW**

Clarity Grade **VS 1**

LABORATORY GROWN DIAMOND REPORT

March 12, 2026

IGI Report Number **LG765633437**

Description **LABORATORY GROWN DIAMOND**

Shape and Cutting Style **CUT CORNERED RECTANGULAR
MODIFIED BRILLIANT**

Measurements **11.60 X 8.23 X 5.87 MM**

GRADING RESULTS

Carat Weight **5.02 CARATS**

Color Grade **FANCY INTENSE YELLOW**

Clarity Grade **VS 1**

ADDITIONAL GRADING INFORMATION

Polish **EXCELLENT**

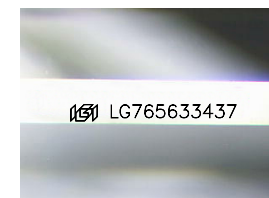
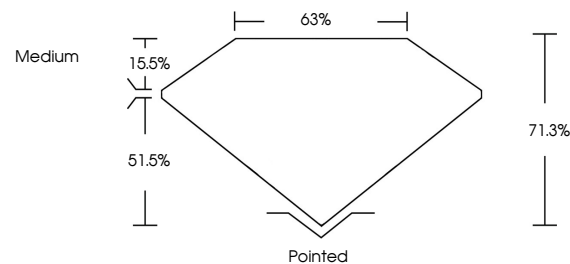
Symmetry **VERY GOOD**

Fluorescence **NONE**

Inscription(s) **IGI LG765633437**

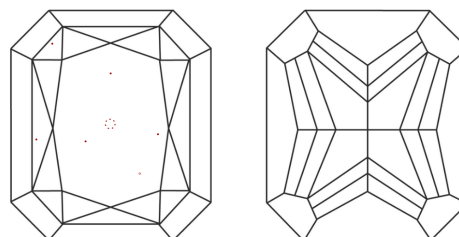
Comments: This Laboratory Grown Diamond was created by Chemical Vapor Deposition (CVD) growth process.

PROPORTIONS



Sample Image Used

CLARITY CHARACTERISTICS



KEY TO SYMBOLS

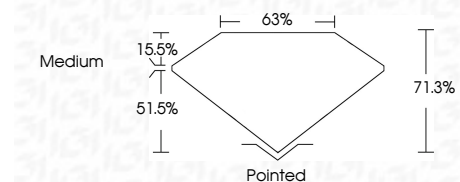
Red symbols indicate internal characteristics.
Green symbols indicate external characteristics.

COLOR

D E F G H I J Faint Very Light Light

CLARITY

FL	IF	VS ¹⁻²	VS ¹⁻²	SI ¹⁻²	I ¹⁻³
Flawless	Internally Flawless	Very Very Slightly Included	Very Slightly Included	Slightly Included	Included



ADDITIONAL GRADING INFORMATION

Polish **EXCELLENT**

Symmetry **VERY GOOD**

Fluorescence **NONE**

Inscription(s) **IGI LG765633437**

Comments: This Laboratory Grown Diamond was created by Chemical Vapor Deposition (CVD) growth process.



March 12, 2026
IGI Report No LG765633437
CUT CORNERED RECT. MODIFIED BRILLIANT
11.60 X 8.23 X 5.87 MM
5.02 CARATS
FANCY INTENSE YELLOW
VS 1
71.0%
63%
Medium
Pointed
EXCELLENT
VERY GOOD
NONE
IGI LG765633437
Comments: This Laboratory Grown Diamond was created by Chemical Vapor Deposition (CVD) growth process.