



March 27, 2026

IGI Report Number **LG765631577**

**TRAPEZE STEP CUT  
LABORATORY GROWN DIAMOND  
8.26 X 4.77 X 2.75 MM**

Carat Weight **0.79 CARAT**  
Color Grade **E**  
Clarity Grade **VVS 2**  
Polish **VERY GOOD**  
Symmetry **VERY GOOD**  
Fluorescence **NONE**  
Inscription(s) **IGI LG765631577**

Comments: This Laboratory Grown Diamond was created by Chemical Vapor Deposition (CVD) growth process. Type IIa

**LABORATORY GROWN DIAMOND REPORT**

March 27, 2026

IGI Report Number

**LG765631577**

Description

**LABORATORY GROWN DIAMOND**

Shape and Cutting Style

**TRAPEZE STEP CUT**

Measurements

**8.26 X 4.77 X 2.75 MM**

**GRADING RESULTS**

Carat Weight

**0.79 CARAT**

Color Grade

**E**

Clarity Grade

**VVS 2**

**ADDITIONAL GRADING INFORMATION**

Polish

**VERY GOOD**

Symmetry

**VERY GOOD**

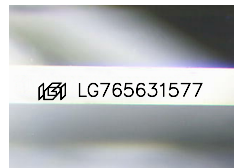
Fluorescence

**NONE**

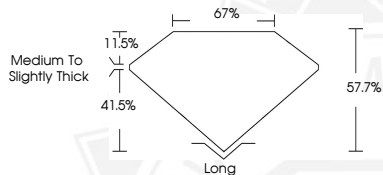
Inscription(s)

**IGI LG765631577**

Comments: This Laboratory Grown Diamond was created by Chemical Vapor Deposition (CVD) growth process. Type IIa



Sample Image Used



March 27, 2026

IGI Report Number **LG765631577**

**TRAPEZE STEP CUT  
LABORATORY GROWN DIAMOND  
8.26 X 4.77 X 2.75 MM**

Carat Weight **0.79 CARAT**  
Color Grade **E**  
Clarity Grade **VVS 2**  
Polish **VERY GOOD**  
Symmetry **VERY GOOD**  
Fluorescence **NONE**  
Inscription(s) **IGI LG765631577**

Comments: This Laboratory Grown Diamond was created by Chemical Vapor Deposition (CVD) growth process. Type IIa



THIS DOCUMENT WAS PRODUCED WITH THE FOLLOWING SECURITY MEASURES: SPECIAL DOCUMENT PAPER, INK SCREENS, WATERMARK, BACKGROUND DESIGNS, HOLOGRAM AND OTHER SECURITY FEATURES NOT LISTED AND DO EXCEED DOCUMENT SECURITY INDUSTRY GUIDELINES.