



ELECTRONIC COPY

LG765631318
Report verification at igi.org



March 23, 2026
IGI Report Number **LG765631318**
Description **LABORATORY GROWN DIAMOND**
Shape and Cutting Style **PEAR MIXED CUT**
Measurements **10.14 X 6.44 X 2.35 MM**
GRADING RESULTS
Carat Weight **1.10 CARAT**
Color Grade **VERY LIGHT BROWN**
Clarity Grade **VVS 2**

LABORATORY GROWN DIAMOND REPORT

March 23, 2026
IGI Report Number **LG765631318**
Description **LABORATORY GROWN DIAMOND**
Shape and Cutting Style **PEAR MIXED CUT**
Measurements **10.14 X 6.44 X 2.35 MM**

GRADING RESULTS

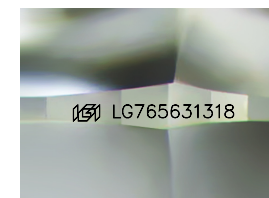
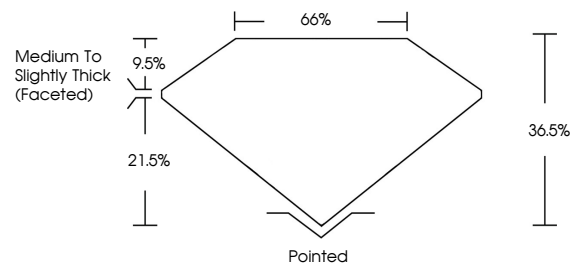
Carat Weight **1.10 CARAT**
Color Grade **VERY LIGHT BROWN**
Clarity Grade **VVS 2**

ADDITIONAL GRADING INFORMATION

Polish **EXCELLENT**
Symmetry **EXCELLENT**
Fluorescence **SLIGHT**
Inscription(s) **IGI LG765631318**

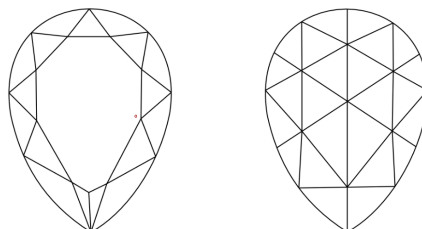
Comments: This Laboratory Grown Diamond was created by Chemical Vapor Deposition (CVD) growth process.
Indications of post-growth treatment.

PROPORTIONS



Sample Image Used

CLARITY CHARACTERISTICS



KEY TO SYMBOLS

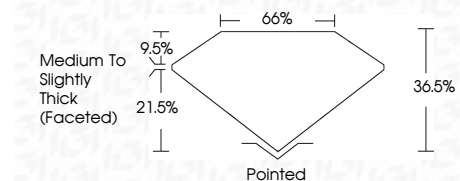
Red symbols indicate internal characteristics.
Green symbols indicate external characteristics.

COLOR

D E F G H I J Faint Very Light Light

CLARITY

FL IF VVS¹⁻² VS¹⁻² SI¹⁻² I¹⁻³
Flawless Internally Flawless Very Very Slightly Included Very Slightly Included Slightly Included Included



ADDITIONAL GRADING INFORMATION

Polish **EXCELLENT**
Symmetry **EXCELLENT**
Fluorescence **SLIGHT**
Inscription(s) **IGI LG765631318**
Comments: This Laboratory Grown Diamond was created by Chemical Vapor Deposition (CVD) growth process.
Indications of post-growth treatment.



March 23, 2026
IGI Report No **LG765631318**
PEAR MIXED CUT
10.14 X 6.44 X 2.35 MM
Carat Weight **1.10 CARAT**
Color Grade **VERY LIGHT BROWN**
Clarity Grade **VVS 2**
Depth **21.5%**
Table **9.5%**
Girdle **Medium to Slightly Thick (Faceted)**
Culet **Pointed**
Polish **EXCELLENT**
Symmetry **EXCELLENT**
Fluorescence **SLIGHT**
Inscription(s) **IGI LG765631318**
Comments: This Laboratory Grown Diamond was created by Chemical Vapor Deposition (CVD) growth process.
Indications of post-growth treatment.