



ELECTRONIC COPY

LG765630935 Report verification at igi.org



March 18, 2026 IGI Report Number LG765630935 Description LABORATORY GROWN DIAMOND Shape and Cutting Style HEXAGONAL MODIFIED BRILLIANT Measurements 8.74 X 7.41 X 4.62 MM GRADING RESULTS Carat Weight 2.01 CARATS Color Grade F Clarity Grade VS 1

LABORATORY GROWN DIAMOND REPORT

March 18, 2026 IGI Report Number LG765630935 Description LABORATORY GROWN DIAMOND Shape and Cutting Style HEXAGONAL MODIFIED BRILLIANT Measurements 8.74 X 7.41 X 4.62 MM

GRADING RESULTS

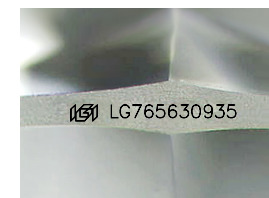
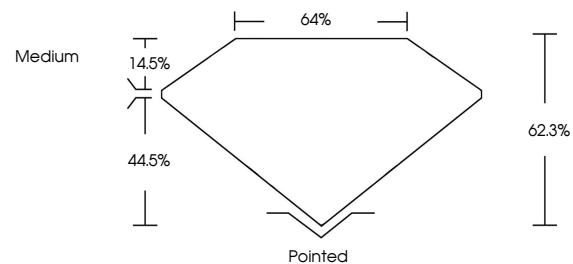
Carat Weight 2.01 CARATS Color Grade F Clarity Grade VS 1

ADDITIONAL GRADING INFORMATION

Polish EXCELLENT Symmetry EXCELLENT Fluorescence NONE Inscription(s) LG765630935

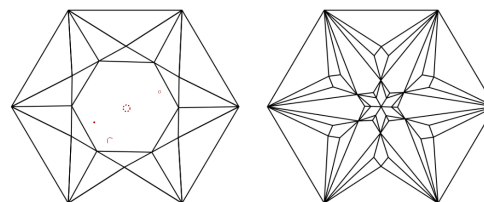
Comments: This Laboratory Grown Diamond was created by Chemical Vapor Deposition (CVD) growth process. Type IIa

PROPORTIONS



Sample Image Used

CLARITY CHARACTERISTICS



KEY TO SYMBOLS

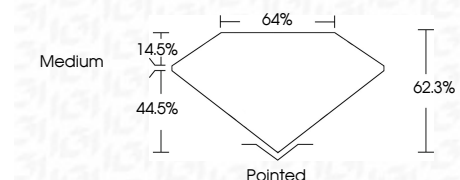
Red symbols indicate internal characteristics. Green symbols indicate external characteristics.

COLOR

D E F G H I J Faint Very Light Light

CLARITY

FL IF VS 1-2 VS 2-3 SI 1-2 I 1-3 Flawless Internally Flawless Very Very Slightly Included Very Slightly Included Slightly Included Included



ADDITIONAL GRADING INFORMATION

Polish EXCELLENT Symmetry EXCELLENT Fluorescence NONE Inscription(s) LG765630935 Comments: This Laboratory Grown Diamond was created by Chemical Vapor Deposition (CVD) growth process. Type IIa



March 18, 2026 IGI Report No LG765630935 HEXAGONAL MODIFIED BRILLIANT 2.01 CARATS F VS 1 62.3% 44.5% Medium Pointed EXCELLENT EXCELLENT NONE NONE LG765630935 Comments: This Laboratory Grown Diamond was created by Chemical Vapor Deposition (CVD) growth process. Type IIa