



**ELECTRONIC COPY**

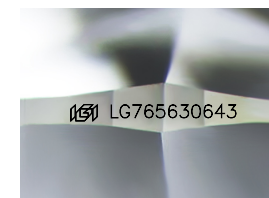
LG765630643  
Report verification at igi.org



March 17, 2026  
IGI Report Number **LG765630643**  
Description **LABORATORY GROWN DIAMOND**  
Shape and Cutting Style **ROUND BRILLIANT**  
Measurements **8.78 - 8.84 X 5.35 MM**

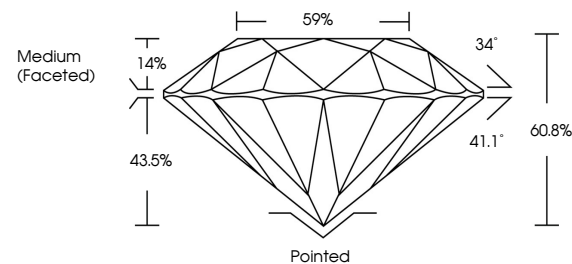
**GRADING RESULTS**

Carat Weight **2.54 CARATS**  
Color Grade **F**  
Clarity Grade **VS 1**  
Cut Grade **IDEAL**

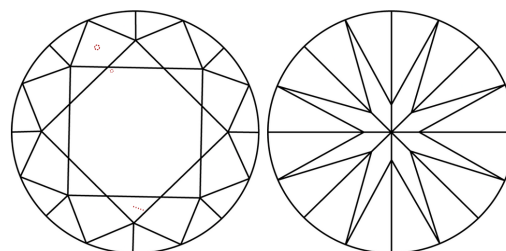


Sample Image Used

**PROPORTIONS**



**CLARITY CHARACTERISTICS**



**KEY TO SYMBOLS**

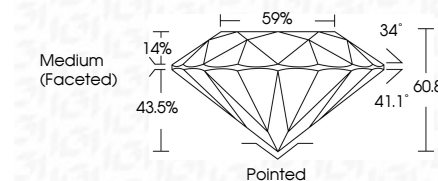
Red symbols indicate internal characteristics.  
Green symbols indicate external characteristics.

**COLOR**

D E F G H I J Faint Very Light Light

**CLARITY**

FL	IF	VS <sup>1-2</sup>	VS <sup>1-2</sup>	SI <sup>1-2</sup>	I <sup>1-3</sup>
Flawless	Internally Flawless	Very Very Slightly Included	Very Slightly Included	Slightly Included	Included



**ADDITIONAL GRADING INFORMATION**

Polish **EXCELLENT**  
Symmetry **EXCELLENT**  
Fluorescence **NONE**  
Inscription(s) **IGI LG765630643**  
Comments: This Laboratory Grown Diamond was created by Chemical Vapor Deposition (CVD) growth process. Type IIa



**IGI**



March 17, 2026  
IGI Report No LG765630643  
**ROUND BRILLIANT**  
8.78 - 8.84 X 5.35 MM  
2.54 CARATS  
F  
VS 1  
IDEAL  
60.8%  
59%  
Medium (Faceted)Pointed  
EXCELLENT  
EXCELLENT  
NONE  
NONE  
IGI LG765630643  
Comments: This Laboratory Grown Diamond was created by Chemical Vapor Deposition (CVD) growth process. Type IIa