



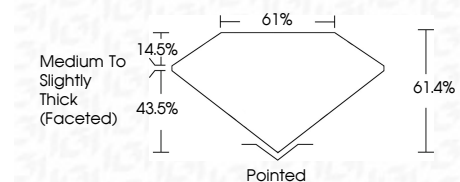
**ELECTRONIC COPY**

LG765630533  
Report verification at igi.org



March 13, 2026  
IGI Report Number **LG765630533**  
Description **LABORATORY GROWN DIAMOND**  
Shape and Cutting Style **ROUND MODIFIED BRILLIANT**  
Measurements **7.94 - 7.93 X 4.87 MM**

**GRADING RESULTS**  
Carat Weight **2.06 CARATS**  
Color Grade **E**  
Clarity Grade **VVS 2**



**ADDITIONAL GRADING INFORMATION**  
Polish **EXCELLENT**  
Symmetry **EXCELLENT**  
Fluorescence **NONE**  
Inscription(s) **IGI LG765630533**  
Comments: This Laboratory Grown Diamond was created by Chemical Vapor Deposition (CVD) growth process. Type IIa



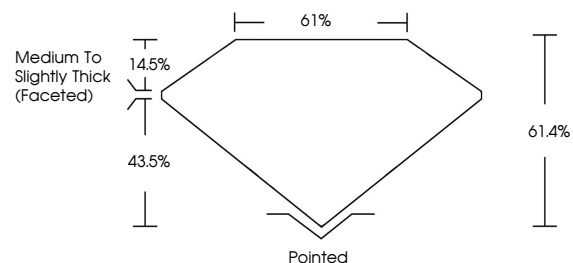
March 13, 2026  
IGI Report No **LG765630533**  
**ROUND MODIFIED BRILLIANT**  
7.94 - 7.93 X 4.87 MM  
2.06 CARATS  
E  
VVS 2  
61.4%  
61%  
Medium to Slightly Thick (Faceted)  
Pointed  
EXCELLENT  
EXCELLENT  
NONE  
IGI LG765630533  
Comments: This Laboratory Grown Diamond was created by Chemical Vapor Deposition (CVD) growth process. Type IIa

March 13, 2026  
IGI Report Number **LG765630533**  
Description **LABORATORY GROWN DIAMOND**  
Shape and Cutting Style **ROUND MODIFIED BRILLIANT**  
Measurements **7.94 - 7.93 X 4.87 MM**

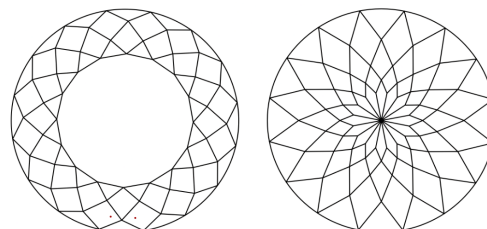
**GRADING RESULTS**  
Carat Weight **2.06 CARATS**  
Color Grade **E**  
Clarity Grade **VVS 2**

**ADDITIONAL GRADING INFORMATION**  
Polish **EXCELLENT**  
Symmetry **EXCELLENT**  
Fluorescence **NONE**  
Inscription(s) **IGI LG765630533**  
Comments: This Laboratory Grown Diamond was created by Chemical Vapor Deposition (CVD) growth process. Type IIa

**PROPORTIONS**

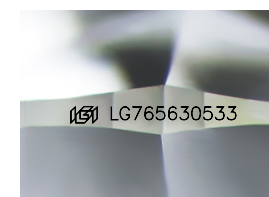


**CLARITY CHARACTERISTICS**



**KEY TO SYMBOLS**

Red symbols indicate internal characteristics.  
Green symbols indicate external characteristics.



Sample Image Used

**COLOR**

D E F G H I J Faint Very Light Light

**CLARITY**

FL	IF	VVS <sup>1-2</sup>	VS <sup>1-2</sup>	SI <sup>1-2</sup>	I <sup>1-3</sup>
Flawless	Internally Flawless	Very Very Slightly Included	Very Slightly Included	Slightly Included	Included

