



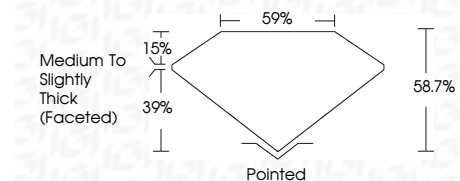
**ELECTRONIC COPY**

LG765629484  
Report verification at igi.org



March 5, 2026  
IGI Report Number **LG765629484**  
Description **LABORATORY GROWN DIAMOND**  
Shape and Cutting Style **TRIANGULAR BRILLIANT**  
Measurements **8.63 X 8.63 X 5.07 MM**

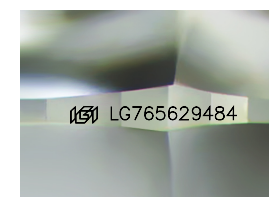
**GRADING RESULTS**  
Carat Weight **2.01 CARATS**  
Color Grade **E**  
Clarity Grade **VVS 2**



**ADDITIONAL GRADING INFORMATION**  
Polish **EXCELLENT**  
Symmetry **EXCELLENT**  
Fluorescence **NONE**  
Inscription(s) **IGI LG765629484**  
Comments: This Laboratory Grown Diamond was created by Chemical Vapor Deposition (CVD) growth process. Type IIa

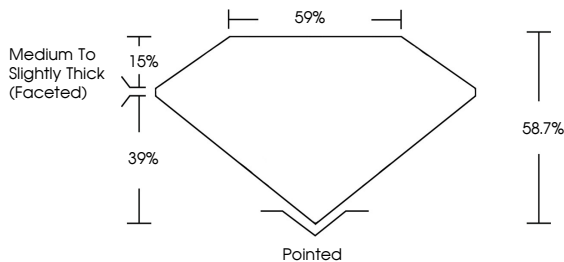


March 5, 2026  
IGI Report No LG765629484  
**TRIANGULAR BRILLIANT**  
8.63 X 8.63 X 5.07 MM  
2.01 CARATS  
E  
2.01 CARATS  
VVS 2  
58.7%  
39%  
Medium to Slightly Thick (Faceted)  
Pointed  
EXCELLENT  
EXCELLENT  
NONE  
IGI LG765629484  
Comments: This Laboratory Grown Diamond was created by Chemical Vapor Deposition (CVD) growth process. Type IIa

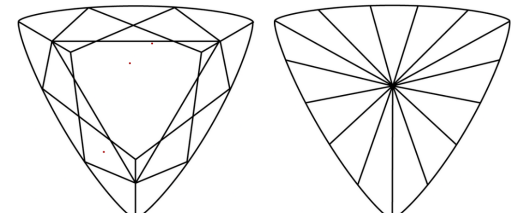


Sample Image Used

**PROPORTIONS**



**CLARITY CHARACTERISTICS**



**KEY TO SYMBOLS**  
Red symbols indicate internal characteristics.  
Green symbols indicate external characteristics.

**COLOR**

D	E	F	G	H	I	J	Faint	Very Light	Light
---	---	---	---	---	---	---	-------	------------	-------

**CLARITY**

FL	IF	VVS <sup>1-2</sup>	VS <sup>1-2</sup>	SI <sup>1-2</sup>	I <sup>1-3</sup>
Flawless	Internally Flawless	Very Very Slightly Included	Very Slightly Included	Slightly Included	Included

