



LABORATORY GROWN DIAMOND REPORT

March 3, 2026
 IGI Report Number **LG765629311**
 Description **LABORATORY GROWN DIAMOND**
 Shape and Cutting Style **ROUND BRILLIANT**
 Measurements **5.19 - 5.23 X 3.00 MM**

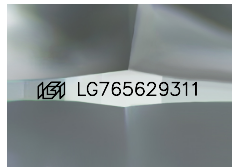
GRADING RESULTS

Carat Weight **0.49 CARAT**
 Color Grade **FANCY INTENSE PINK**
 Clarity Grade **SI 1**
 Cut Grade **EXCELLENT**

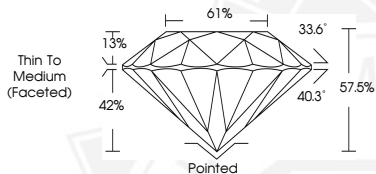
ADDITIONAL GRADING INFORMATION

Polish **VERY GOOD**
 Symmetry **VERY GOOD**
 Fluorescence **SLIGHT**
 Inscription(s) **IGI LG765629311**

Comments: This Laboratory Grown Diamond was created by High Pressure High Temperature (HPHT) growth process. Indications of post-growth treatment.



Sample Image Used



March 3, 2026
 IGI Report Number **LG765629311**
 ROUND BRILLIANT
 LABORATORY GROWN DIAMOND
 5.19 - 5.23 X 3.00 MM
 Carat Weight **0.49 CARAT**
 Color Grade **FANCY INTENSE PINK**
 Clarity Grade **SI 1**
 Cut Grade **EXCELLENT**
 Polish **VERY GOOD**
 Symmetry **VERY GOOD**
 Fluorescence **SLIGHT**
 Inscription(s) **IGI LG765629311**

Comments: This Laboratory Grown Diamond was created by High Pressure High Temperature (HPHT) growth process. Indications of post-growth treatment.



March 3, 2026
 IGI Report Number **LG765629311**
 ROUND BRILLIANT
 LABORATORY GROWN DIAMOND
 5.19 - 5.23 X 3.00 MM
 Carat Weight **0.49 CARAT**
 Color Grade **FANCY INTENSE PINK**
 Clarity Grade **SI 1**
 Cut Grade **EXCELLENT**
 Polish **VERY GOOD**
 Symmetry **VERY GOOD**
 Fluorescence **SLIGHT**
 Inscription(s) **IGI LG765629311**

Comments: This Laboratory Grown Diamond was created by High Pressure High Temperature (HPHT) growth process. Indications of post-growth treatment.

THIS DOCUMENT WAS PRODUCED WITH THE FOLLOWING SECURITY MEASURES: SPECIAL DOCUMENT PAPER, INK SCREENS, WATERMARK, BACKGROUND DESIGNS, HOLOGRAM AND OTHER SECURITY FEATURES NOT LISTED AND DO EXCEED DOCUMENT SECURITY INDUSTRY GUIDELINES.